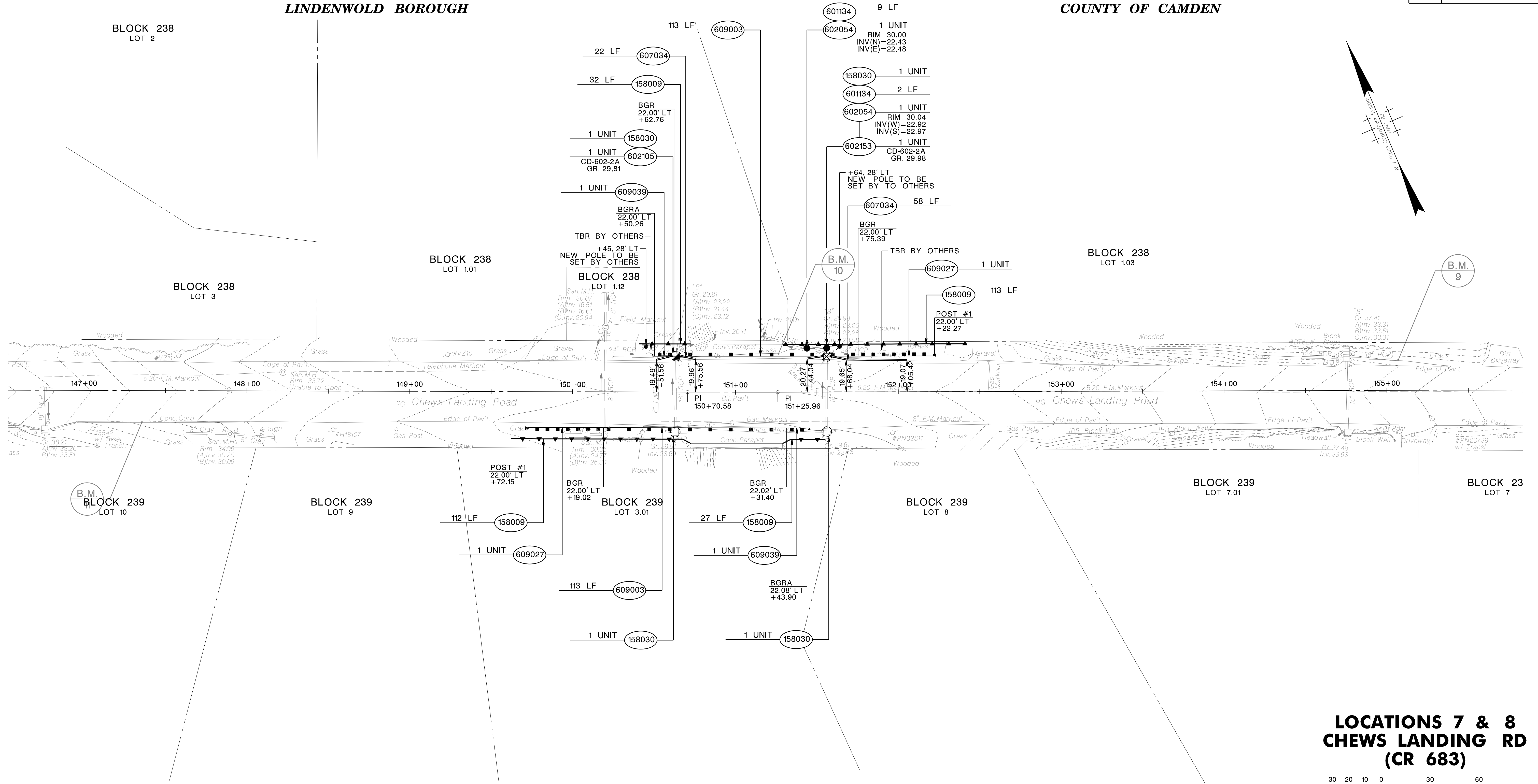
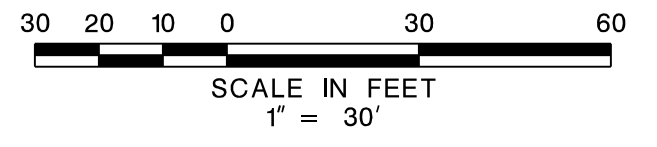


LINDENWOLD BOROUGH

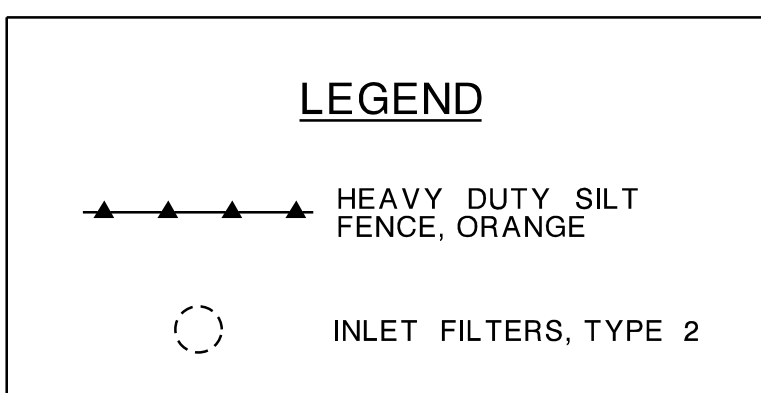
COUNTY OF CAMDEN



**LOCATIONS 7 & 8
CHEWS LANDING RD
(CR 683)**



STD. ITEM NO.	TO BE CONSTRUCTED	CONTRACT QUANTITY
158009M	HEAVY DUTY SILT FENCE, ORANGE	284 LF
158030M	INLET FILTER, TYPE 2, 2' X 4'	4 UNIT
601134P	36" REINFORCED CONCRETE PIPE	11 LF
602054M	MANHOLE, 4' DIAMETER	2 UNIT
602105M	SET INLET TYPE B, CASTING	1 UNIT
602153M	RECONSTRUCTED INLET, TYPE B, USING NEW CASTING	1 UNIT
607034P	9" X 14" CONCRETE VERTICAL CURB	80 LF
609003M	BEAM GUIDE RAIL	226 LF
609027M	TANGENT GUIDE RAIL TERMINAL	2 UNIT
609039M	BEAM GUIDE RAIL ANCHORAGE	2 UNIT



**PRELIMINARY
NOT FOR CONSTRUCTION**

CAMDEN COUNTY DEPT. OF PUBLIC WORKS

CONSTRUCTION PLANS

**ROADWAY SAFETY IMPROVEMENTS FY 2022
CONTRACT NO.**

URBAN ENGINEERS, INC.
CERTIFICATE OF AUTHORIZATION NO. 24GA28033900

STEVEN B. LOCKE
NEW JERSEY PROFESSIONAL ENGINEER LICENSE NO. 45263