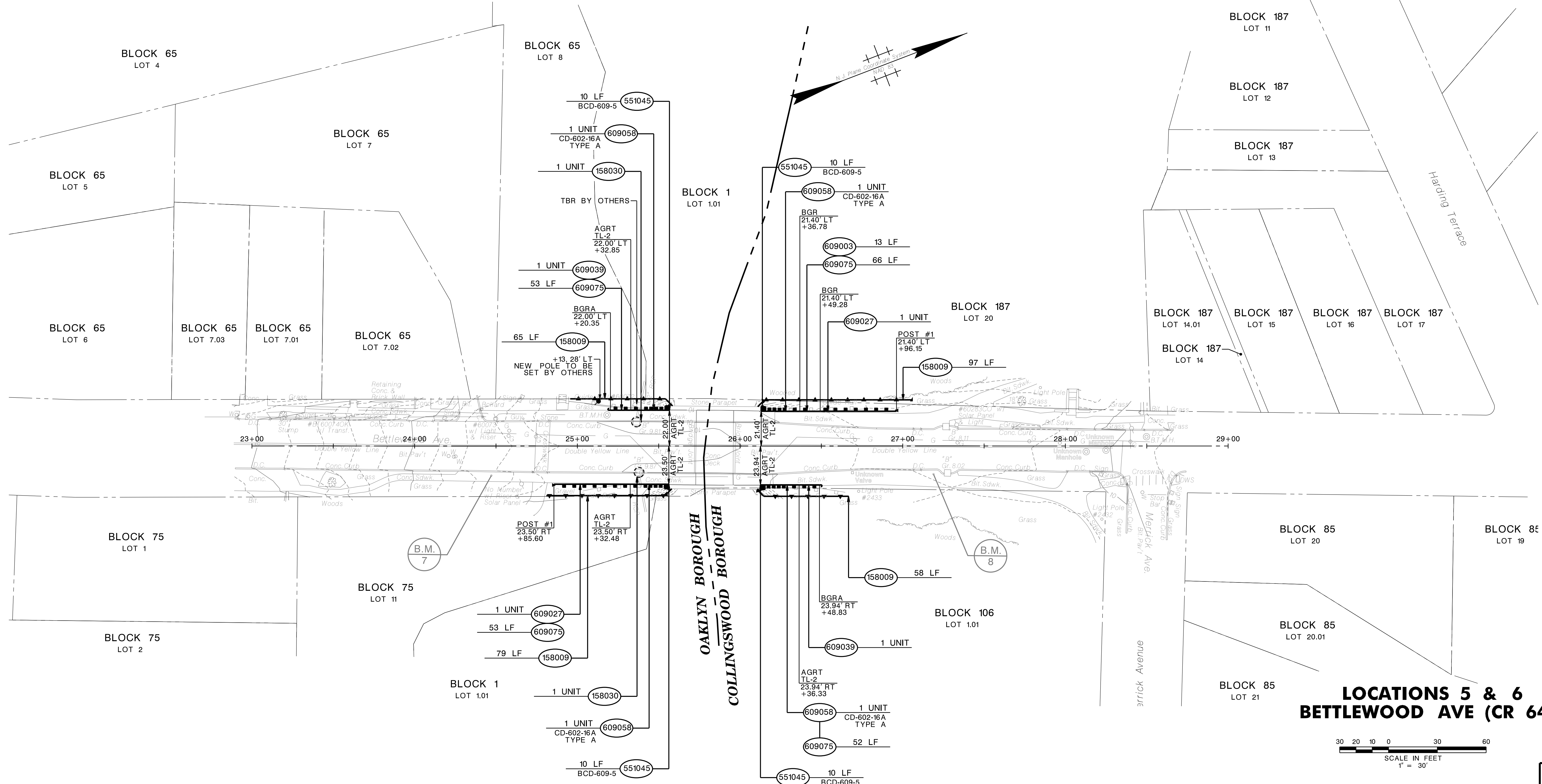
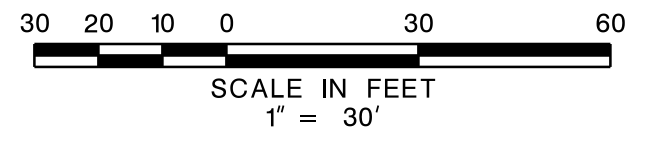


OAKLYN BOROUGH & COLLINGSWOOD BOROUGH

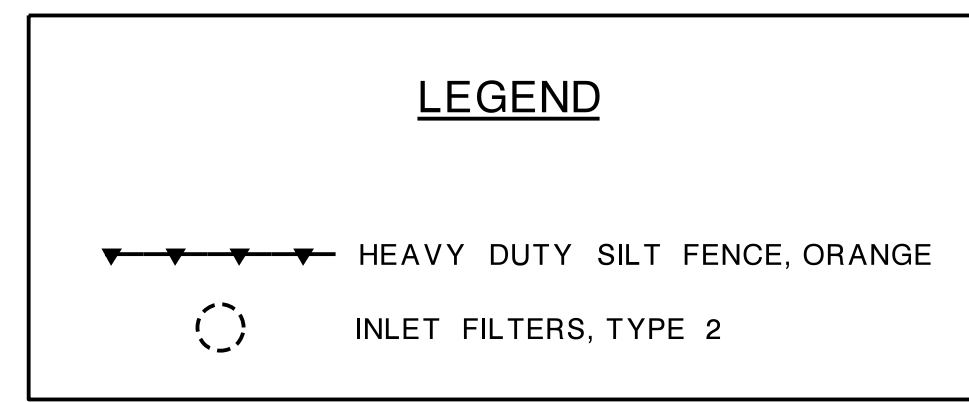
COUNTY OF CAMDEN



**LOCATIONS 5 & 6
BETTLEWOOD AVE (CR 648)**



STD. ITEM NO.	TO BE CONSTRUCTED	CONTRACT QUANTITY
158009M	HEAVY DUTY SILT FENCE, ORANGE	299 LF
158030M	INLET FILTER, TYPE 2, 2' X 4'	2 UNIT
551045M	PARAPET MODIFICATIONS	40 LF
609003M	BEAM GUIDE RAIL	13 LF
609027M	TANGENT GUIDE RAIL TERMINAL	2 UNIT
609039M	BEAM GUIDE RAIL ANCHORAGE	2 UNIT
609058M	APPROACH GUIDE RAIL TRANSITION TL-2	4 UNIT
609075M	REMOVAL OF BEAM GUIDE RAIL	224 LF



**PRELIMINARY
NOT FOR CONSTRUCTION**

CAMDEN COUNTY DEPT. OF PUBLIC WORKS

CONSTRUCTION PLANS

ROADWAY SAFETY IMPROVEMENTS FY 2022
CONTRACT NO.

URBAN ENGINEERS, INC.
CERTIFICATE OF AUTHORIZATION NO. 24GA28033900

STEVEN B. LOCKE
NEW JERSEY PROFESSIONAL ENGINEER LICENSE NO. 45263