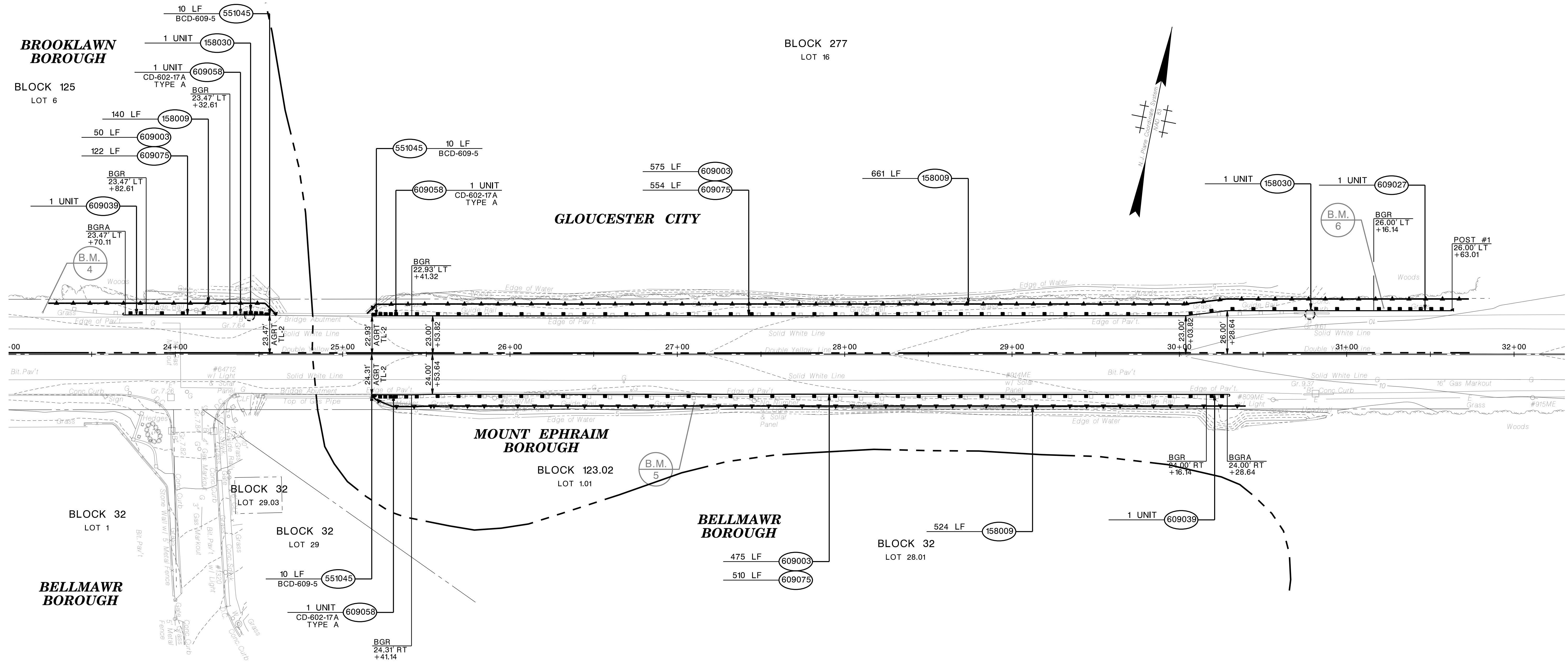
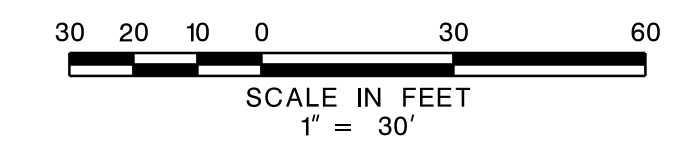


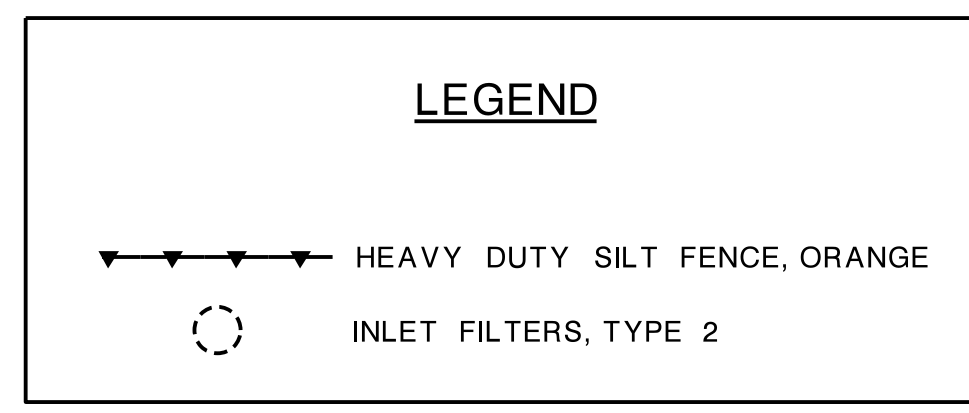
**GLOUCESTER CITY, BROOKLAWN BOROUGH, BELLMAWR BOROUGH & MT. EPHRAIM BOROUGH COUNTY OF CAMDEN**



**LOCATIONS 3 & 4  
KINGS HWY S (CR 551)**



STD. ITEM NO.	TO BE CONSTRUCTED	CONTRACT QUANTITY
158009M	HEAVY DUTY SILT FENCE, ORANGE	1,325 LF
158030M	INLET FILTER, TYPE 2, 2' X 4'	2 UNIT
551045M	PARAPET MODIFICATIONS	30 LF
609003M	BEAM GUIDE RAIL	1,100 LF
609027M	TANGENT GUIDE RAIL TERMINAL	1 UNIT
609039M	BEAM GUIDE RAIL ANCHORAGE	2 UNIT
609058M	APPROACH GUIDE RAIL TRANSITION TL-2	3 UNIT
609075M	REMOVAL OF BEAM GUIDE RAIL	1,186 LF



**PRELIMINARY  
NOT FOR CONSTRUCTION**

CAMDEN COUNTY DEPT. OF PUBLIC WORKS

**CONSTRUCTION PLANS**

**ROADWAY SAFETY IMPROVEMENTS FY 2022  
CONTRACT NO.**

URBAN ENGINEERS, INC.  
 CERTIFICATE OF AUTHORIZATION NO. 24GA28033900  
 STEVEN B. LOCKE  
 NEW JERSEY PROFESSIONAL ENGINEER LICENSE NO. 45263