

**Camden County Department of Public Works
Division of Engineering
Roadway and Drainage Improvements Evesham Road
Runnemede Borough, Magnolia Borough and
Gloucester Township, Camden County, New Jersey
Contract B22-21 Hartford to Charles
Progress Report No. 28
December 19, 2022 to December 23, 2022**



Figure 1: Concrete curb

Work Completed Period of December 23, 2022

- Concrete curb placement.
- Reset inlet brick and casting.
- Placed 8" curb piece at B inlet.
- Placed topsoil at various locations.
- Removed silt fence.



Figure 2: Topsoil

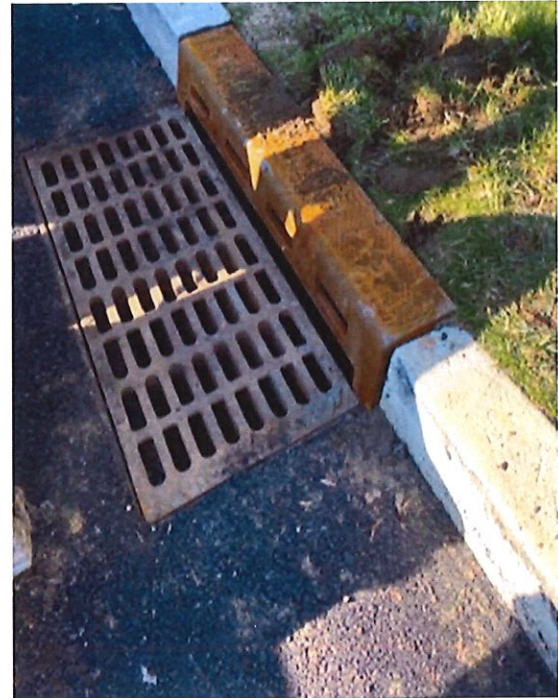


Figure 3: New curb piece

Quantities Period of December 23, 2022

- **Item # 58:** Curb Piece (1 Unit)
- **Item # 71:** 9" X "16 Concrete Vertical Curb (22 LF)
- **Item #103:** Topsoil (67.33 SY)

Summary of Work Completed Period of December 23, 2022

- Contractor on site to complete all punchlist items. Inlet brick and castings were reset, and curb patched in various locations. Crew setup forms and completed concrete curb placement and installed an 8" curb piece at B inlet 34. Topsoil was placed at various locations and silt fencing was removed.

Anticipated Work for Period of December 26, 2022

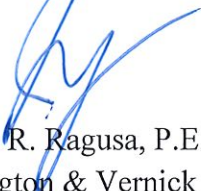
- Address punchlist items on site.

Notice to Proceed: May 16, 2022

Substantial Completion: November 12, 2022 (Time extension expected)

Final Completion: December 12, 2022

Prepared By:



Joseph R. Ragusa, P.E.
Remington & Vernick Engineers