

# Camden County LINK Trail Cooper River Bicycle/Pedestrian Bridge Public Meeting August 17, 2022



Future Bike/Pedestrian Bridge

NJDOT Project No. 5808413  
Federal Project No. TA-D00S(568)



# Introductions



**Mr. Jeff Nash**

Camden County Commissioner



**Jack Sworaski**

Camden County Department of Parks



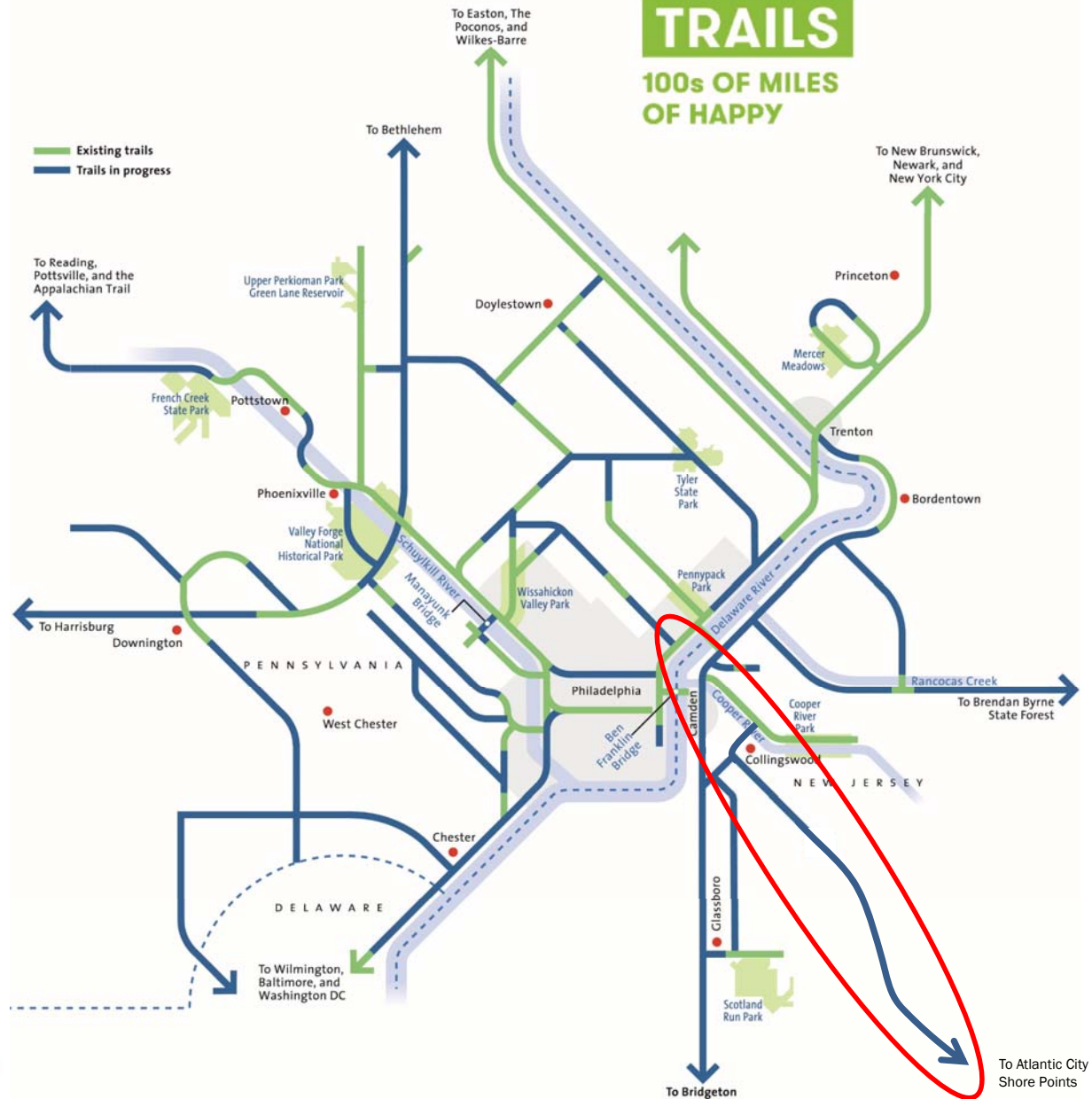
**Matt Ludwig, PE, AICP**

NV5 Project Manager

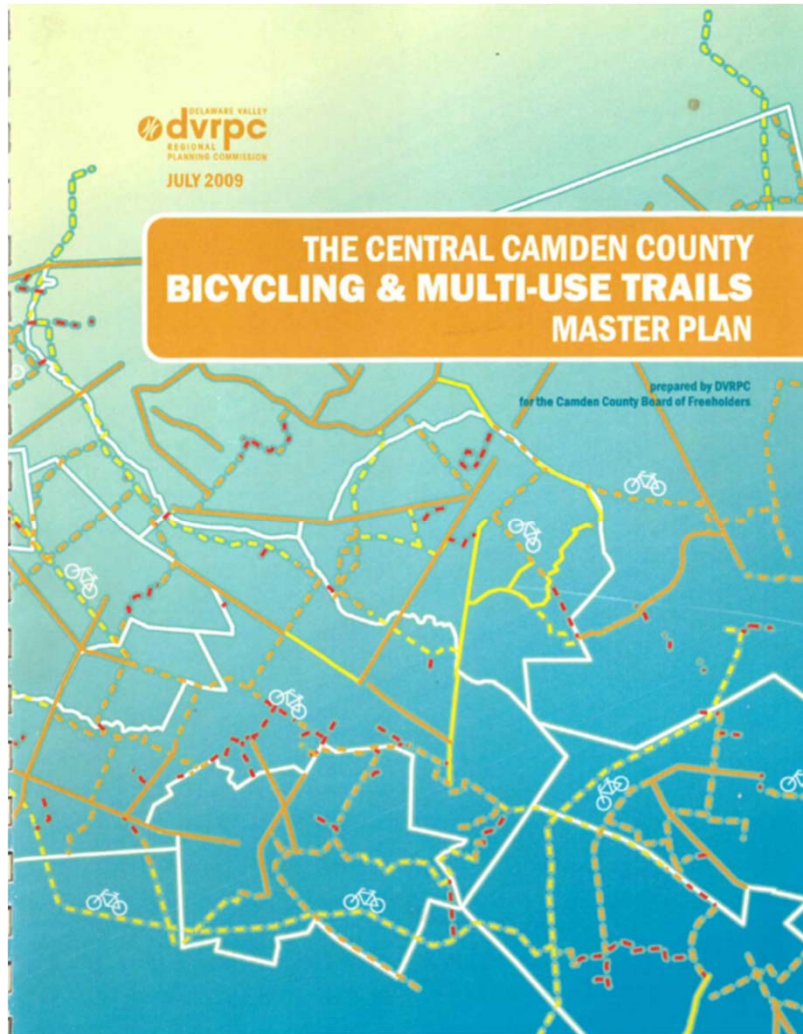


# THE CIRCUIT TRAILS

100s OF MILES  
OF HAPPY





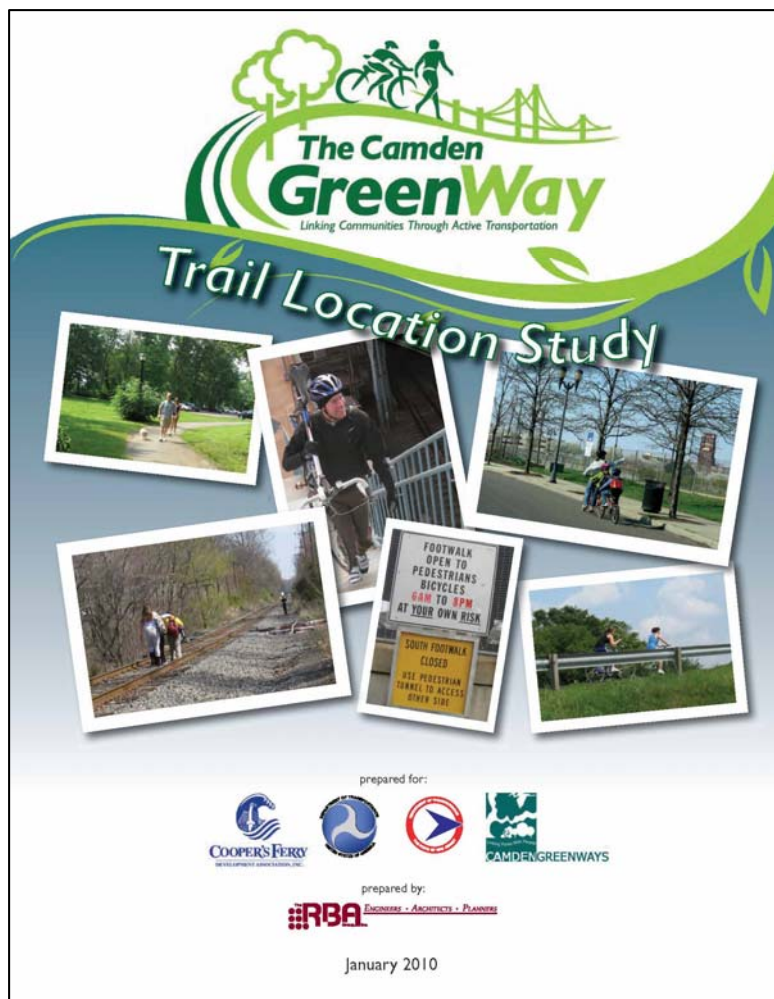


## 2007

---

Camden County receives a Smart Growth Grant from the Association of New Jersey Environmental Commissions to develop the **Central Camden County Bicycling and Multi-Use Trail Plan** for 10 County municipalities, the first phase of what becomes a four phase plan. This first phase is completed by the Delaware Valley Regional Planning Commission (DVRPC) in 2009.

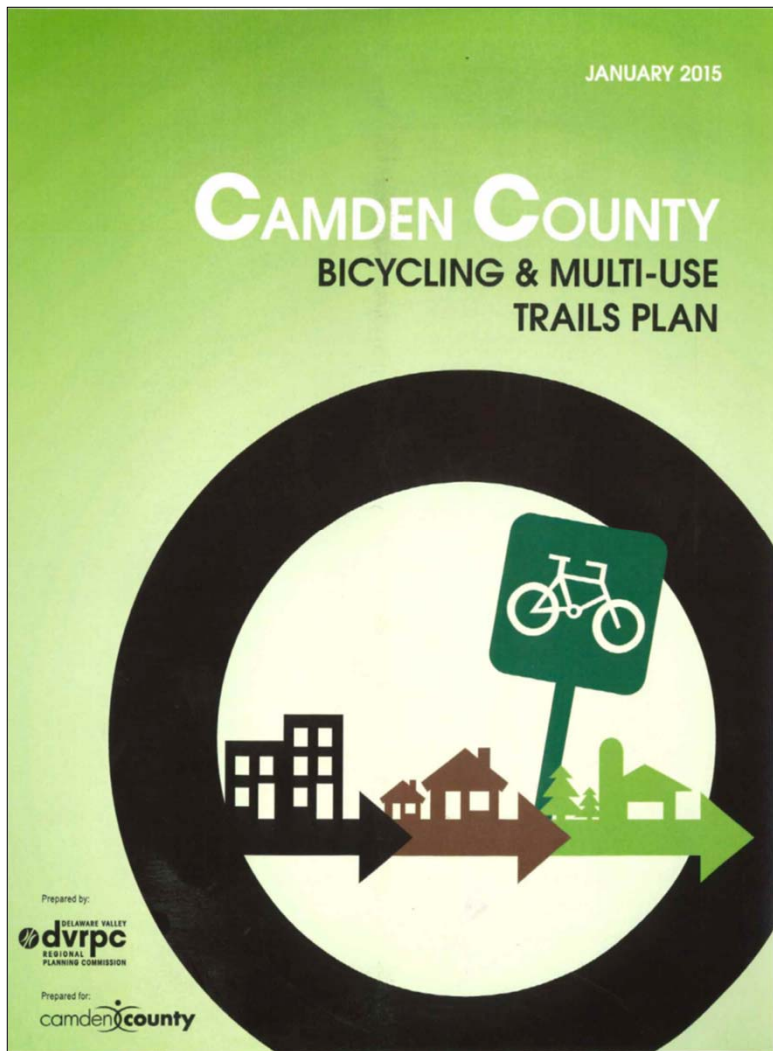




# 2010

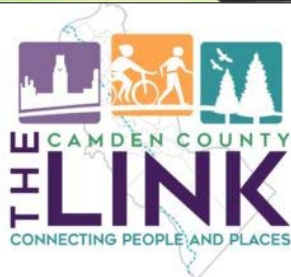
Camden Community Partnership (formerly Cooper's Ferry Partnership), in association with NJDOT, completes the **Camden GreenWay Trail Location Study**. This study examined locations for off-road trails throughout Camden, with a focus on regional connections.



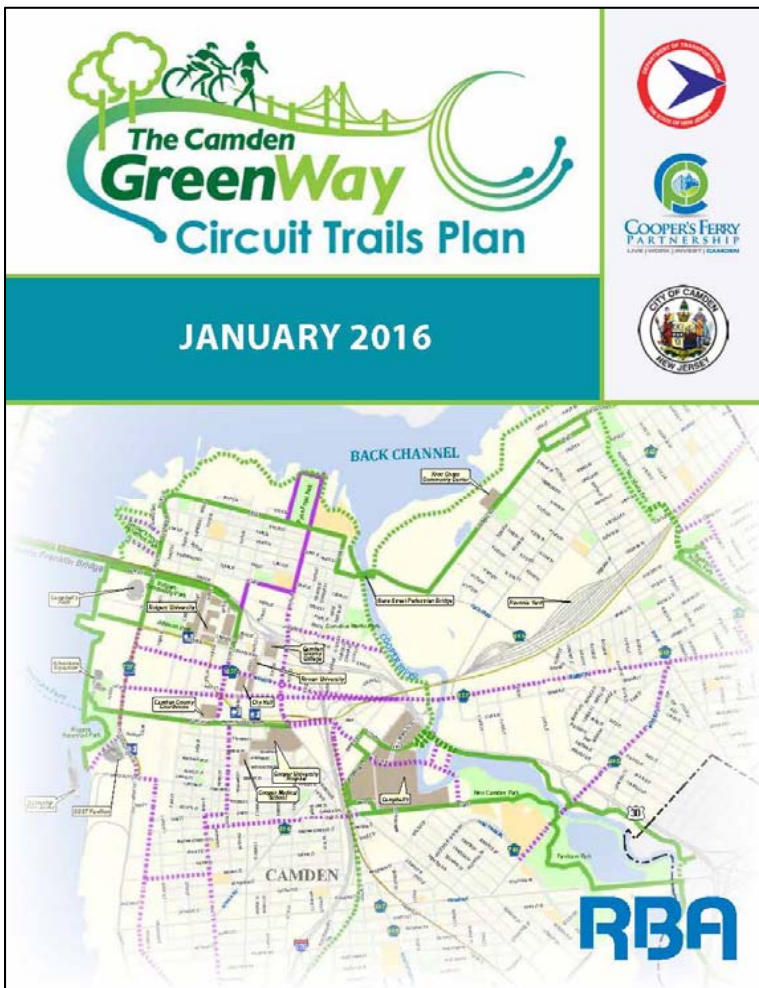


# 2015

The Camden County Bicycling and Multi-Use Trails Plan is completed by the DVRPC and is incorporated as an element of the County's updated Comprehensive Plan. The trails plan identifies an interconnected network of nearly 500 miles including recommended routes, bike lanes and off road trails







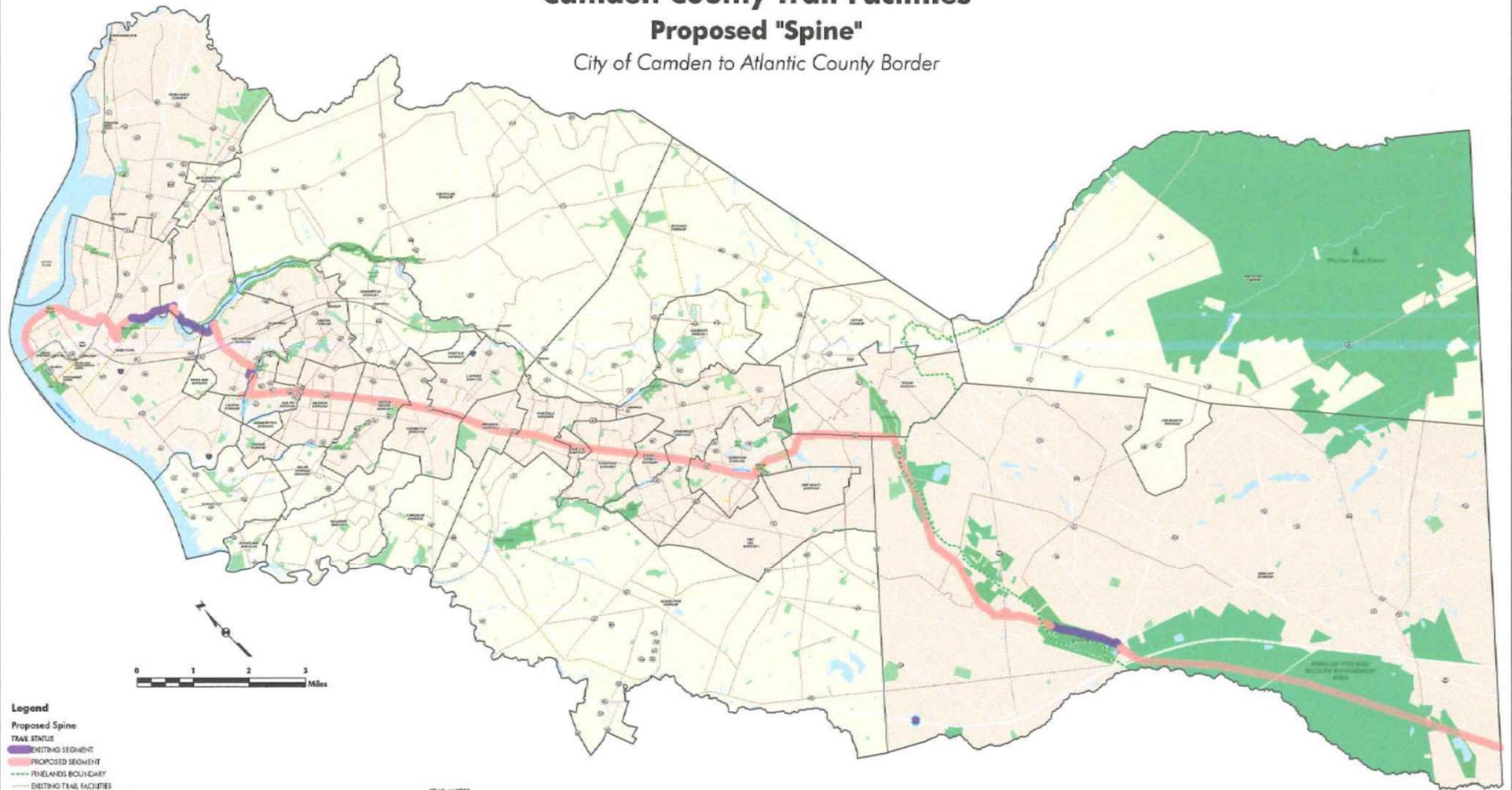
## 2016

The Camden GreenWay Circuit Trails Plan integrates the previous planning effort in 2010 and ties into the emerging Circuit Trails network. A separate design guide is compiled in 2017.



# Camden County Trail Facilities Proposed "Spine"

City of Camden to Atlantic County Border



## Legend

### Proposed Spine

#### TRAIL STATUS

EXISTING SEGMENT

PROPOSED SEGMENT

FINLANDS BOUNDARY

EXISTING TRAIL FACILITIES

RECOMMENDED TRAIL FACILITIES

BODIES OF WATER

COUNTY FACILITIES

MUNICIPAL PARKS

STATE OWNED PROPERTIES

MUNICIPALITIES ALONG "SPINE"

## TRAIL MILES

442 PROPOSED TRAILS (490.16 MILES)

73 EXISTING TRAILS (48.65 MILES)

SPINE WOULD RUN APPROX. 32 MILES FROM DELAWARE RIVER

TO ATLANTIC COUNTY BORDER

camden county

Making It Better, Together.

PLANNING • DESIGN • CONSTRUCTION





# CROSS CAMDEN COUNTY TRAIL

## FEASIBILITY PLAN



camden county  
Making It Greener, Together.  
BOARD OF FREEHOLDERS

JUNE 2017



# 2017



### Segment 1 - Camden Waterfront

- Recommended Alignment
- Existing Off-Road Bicycle Facility \*
- - - Proposed Off-Road Bicycle Facility \*
- Utility owned parcels
- NJDEP Wetlands
- Gov't/Publicly owned parcels or open space
- DVRPC Suburban Retail District
- Future East Coast Greenway Route

\* from Camden County Cycling and Multi-Use Trails Plan, 2015, DVRPC Publication #13036

Data Sources: [NJ COT Office of GIS for 2015 Aerial Hi Res Orthophotography, 2016 Parcels, Roads, and Municipal Boundaries] [NJDEP Land Use/Land Cover 2012 for wetlands] [DVRPC for Existing/Proposed Off Road Bicycle Facilities and Suburban Retail Districts] [ESRI World Boundaries and Places for place names.]

16

Cross Camden County Trail Feasibility Plan



Study available at:

[CamdenCounty.com/trails](http://CamdenCounty.com/trails)

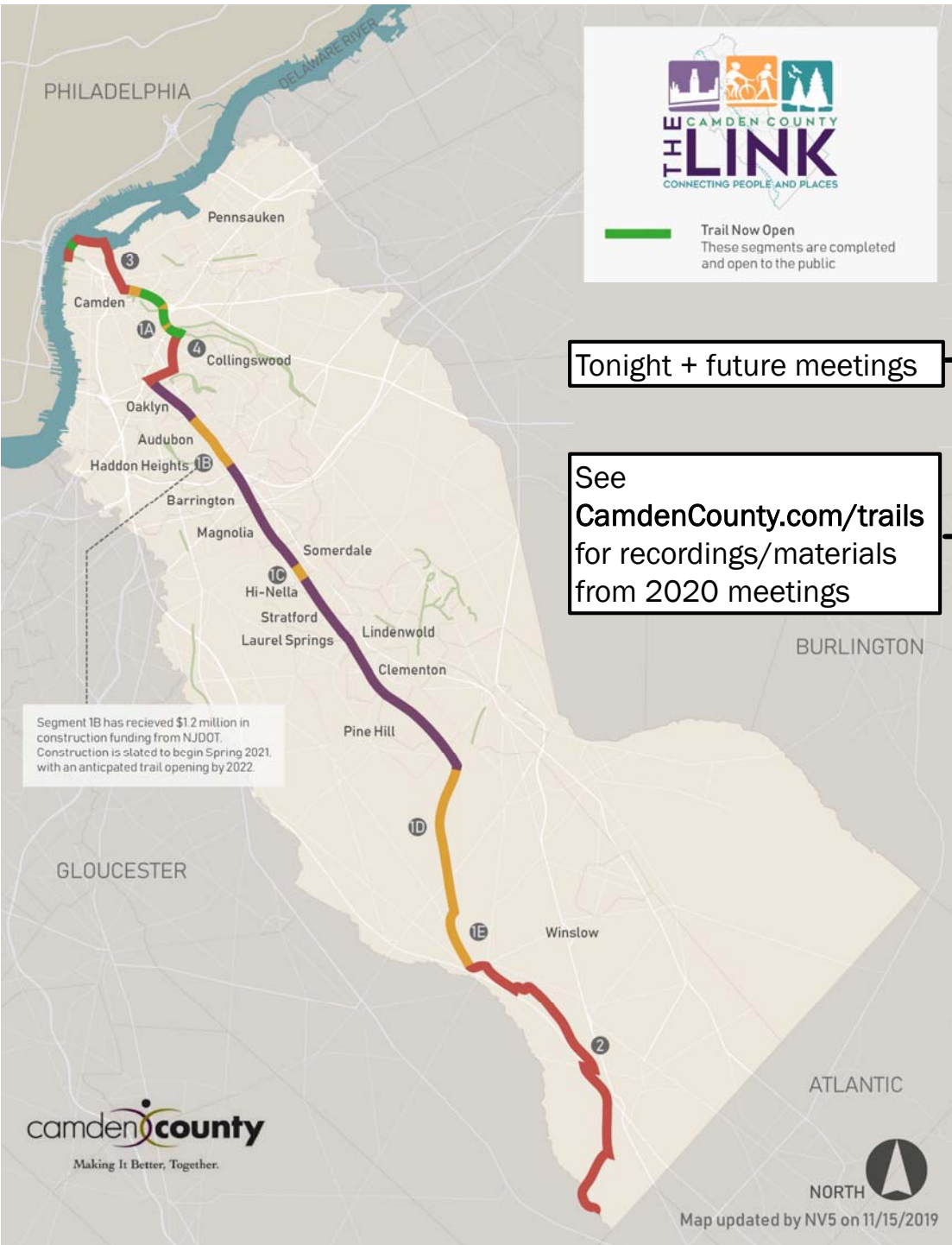


# Benefits of Full Trail Buildout

- Direct commuter connection to employment centers
- Connection between commercial business districts
- Projected \$19.5 million/year in tourism spending
- Projected \$6.8 million/year in health care savings
- Benefits to property and business values



# LINK Trail Overview



## Priority 1 Segments (In Design Phase):

1A: Connect Cooper River Park to Gateway Park and Camden

1B: Audubon & Haddon Heights

1C: Somerdale & Hi-Nella

1D: Open Space along Great Egg Harbor River

1E: New Brooklyn County Park

## Priority 2 Segments (pre-Design Phase):

2: Winslow Wildlife Management Area

3: BFB to Gateway Park along Delaware and Cooper Rivers

4: Collingswood

## Priority 3 Segments (schedule TBD):

Remaining Rail-with-Trail portions

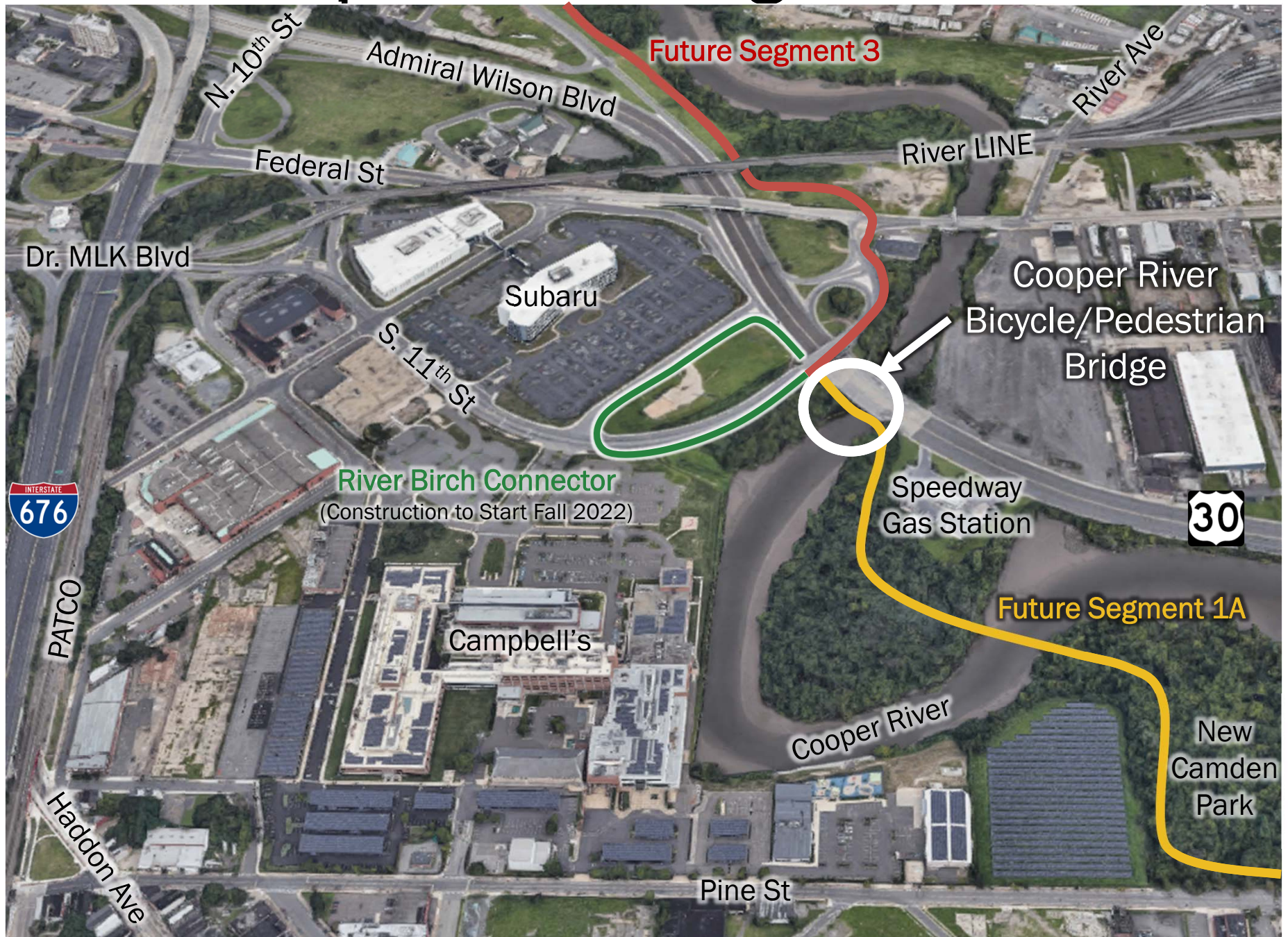


# LINK Segments in Camden





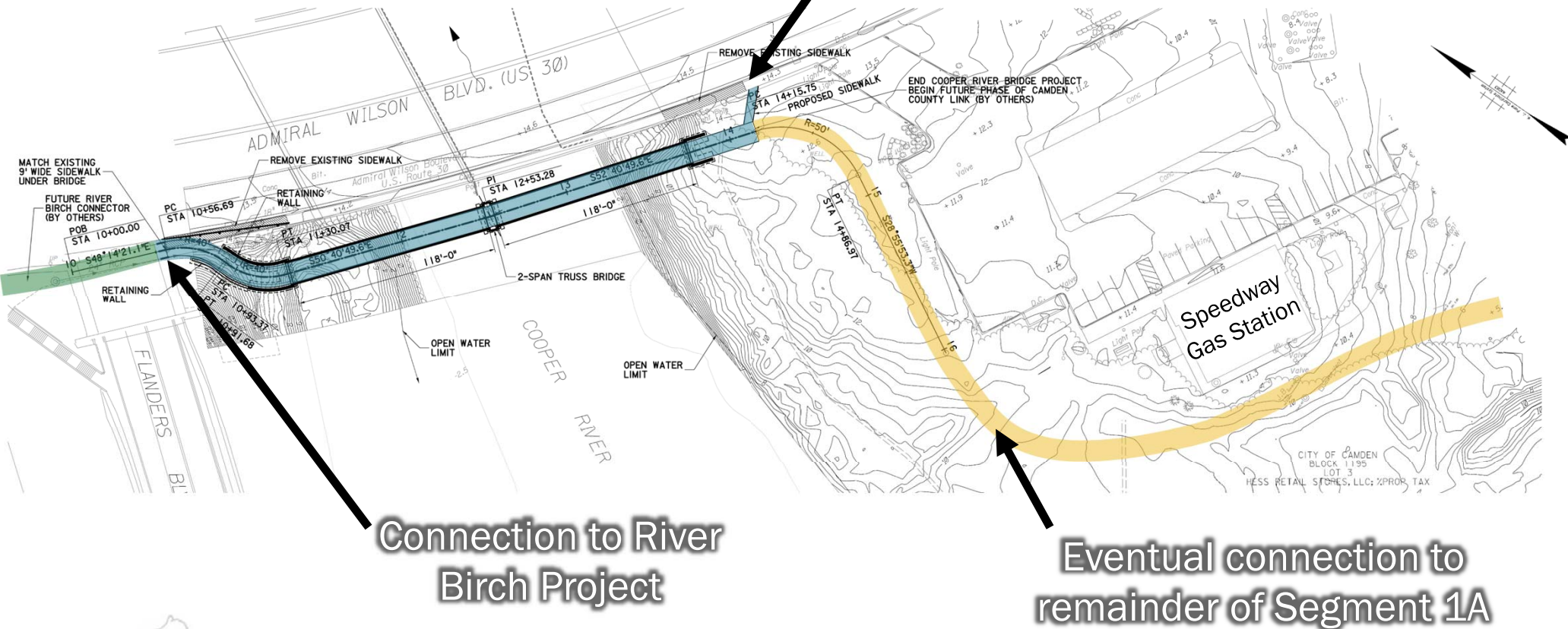
# Cooper River Bridge Context





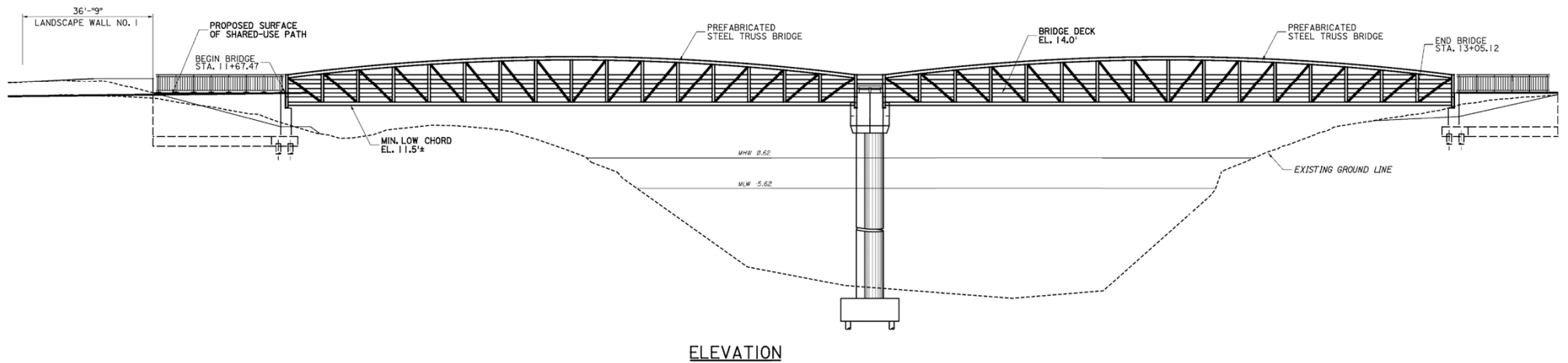
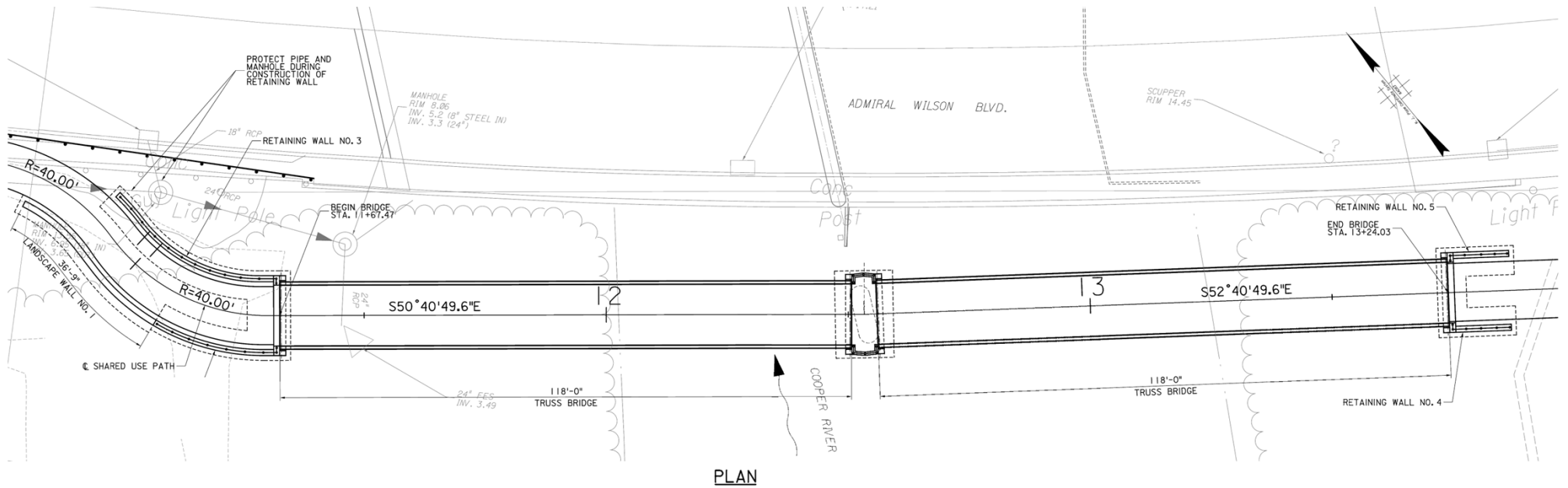
# LINK Trail Plan View of Bridge Area

Short-term connection  
to existing sidewalk





# Bridge Plan and Elevation Views



# Cooper River Bicycle/Pedestrian Bridge Highlights

- \$1 million in construction funding from NJDOT (Transportation Alternatives grant); construction to start in 2023
- Bridge will have 12' wide span
- Two span bridge to match adjacent two span Admiral Wilson Boulevard (Route 30) bridge



# Project Schedule for Cooper River Bicycle/Pedestrian Bridge

- Design Completed: Spring 2023
- Construction Begins: Summer 2023
- Bridge Open to Public: Summer 2024





# Available Online

Visit  
[CamdenCounty.com/trails](https://CamdenCounty.com/trails)  
to:

- View PDF of the preliminary design plans
- View recording of this presentation
- Submit formal comments on the design and sign up for future public meetings



## Camden County LINK Trail

### Parks

- 2022 Summer Park Events & Guide
- Conservation Areas
- Parks
- Camden Athletic Complex
- Facilities
- Camden County LINK Trail
- Camden Water Trail
- Cooper River Park Vision Plan
- Grove Street Trail Connector
- New Jersey Pinelands Commission
- Newton River Water Quality
- Parks Alive 2025
- Plaza at Cooper River Park
- Report a Park Concern
- Reservations, Permits and Fee Schedules

### August 2022 Update:

The Camden County Parks Department, in partnership with its technical and engineering consultant NV5, will host a virtual public meeting this month to present the preliminary design for the Cooper River Bike/Pedestrian Bridge Project. This new 12' wide, dual span steel bridge will cross over the Cooper River near Admiral Wilson Boulevard (Route 30) between Flanders Avenue and the Speedway gas station in Camden. The bridge will provide a safe alternative for pedestrians and bicyclists in the area to cross the Cooper River.

This project also represents one portion of the Camden County LINK Trail. When completed, the Camden County LINK Trail will travel through 17 Camden County municipalities, from the Ben Franklin Bridge in Camden to the Pinelands National Reserve in Winslow Township.

Click on the link below to register for a live, virtual public meeting to be held on Wednesday, August 17<sup>th</sup>, from 6 p.m. to 7 p.m. Representatives from Camden County and NV5 will share information about the preliminary design for the proposed bridge, provide updates on the overall progress of the Camden County LINK Trail, and answer questions at any time throughout the hour.

For those unable to attend the live, virtual meeting, the presentation will be recorded and posted to this project webpage the day following the presentation. Public comments are encouraged and will be accepted until Wednesday, September 7<sup>th</sup>.

### Upcoming Virtual Public Meeting Sign Up:

- Wednesday August 17 – Cooper River Bike/Pedestrian Bridge  
[Click here](#) for public meeting registration

### Public Meeting Materials:

- 2022 Segment 1A – Cooper River Bridge:
  - Public Meeting Plans (posted after August 17<sup>th</sup> Meeting)
  - Recording of Live Meeting (posted after August 17<sup>th</sup> Meeting)
  - Provide Comments or Ask Questions Here (link live after August 17<sup>th</sup> Meeting)





# Questions?

N|V|5

camden*county*  
Making It Better, Together.



Please visit  
[www.CamdenCounty.com/Trails](http://www.CamdenCounty.com/Trails)  
to formally comment on trail design.

Email  
[Jack.Sworaski@camdencounty.com](mailto:Jack.Sworaski@camdencounty.com)  
with any questions.