

MATCH LINE TO SHEET 2

LEGEND

- PROPOSED EDGE OF TRAIL & SIDEWALK
- PROPOSED CURB
- CENTERLINE OF TRAIL
- CONRAIL RIGHT-OF-WAY

NOTE: PLAN SHOWN IS PRELIMINARY
AND IS SUBJECT TO CHANGE

REVISION NO.	DATE	REVISION

PLAN VIEW SCALE
0 30 60
SCALE IN FEET

N|V|5

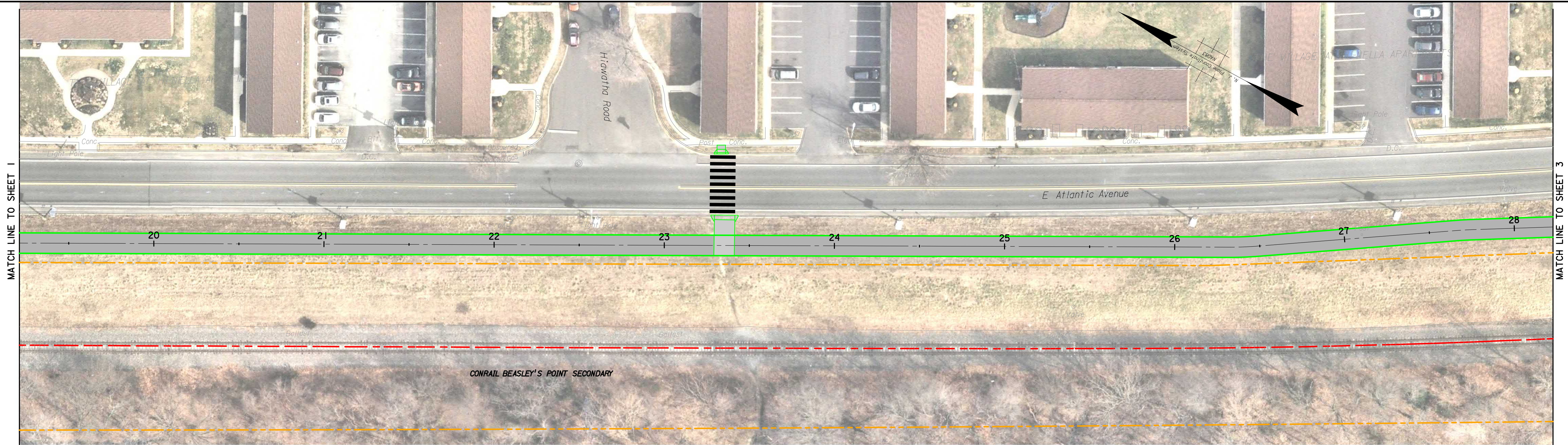
1315 Walnut Street, Suite 900
Philadelphia, PA 19107
Certification of Authorization No. 24GA27930500

CAMDEN COUNTY LINK TRAIL
SEGMENT 1C
PUBLIC MEETING PLAN VIEW LAYOUT

CAMDEN COUNTY

NEW JERSEY

PROJECT NO	DATE
540.1C	JULY 2020
DRAWN BY	DESIGNED BY
LC	LC
SCALE	CHECKED BY
1"=30'	ML
NV5	
SHEET NO. 1	of 3



LEGEND

- PROPOSED EDGE OF TRAIL & SIDEWALK
- PROPOSED CURB
- CENTERLINE OF TRAIL
- CONRAIL RIGHT-OF-WAY

NOTE: PLAN SHOWN IS PRELIMINARY
AND IS SUBJECT TO CHANGE

REVISION NO.	DATE	REVISION

PLAN VIEW SCALE
0 30 60
SCALE IN FEET



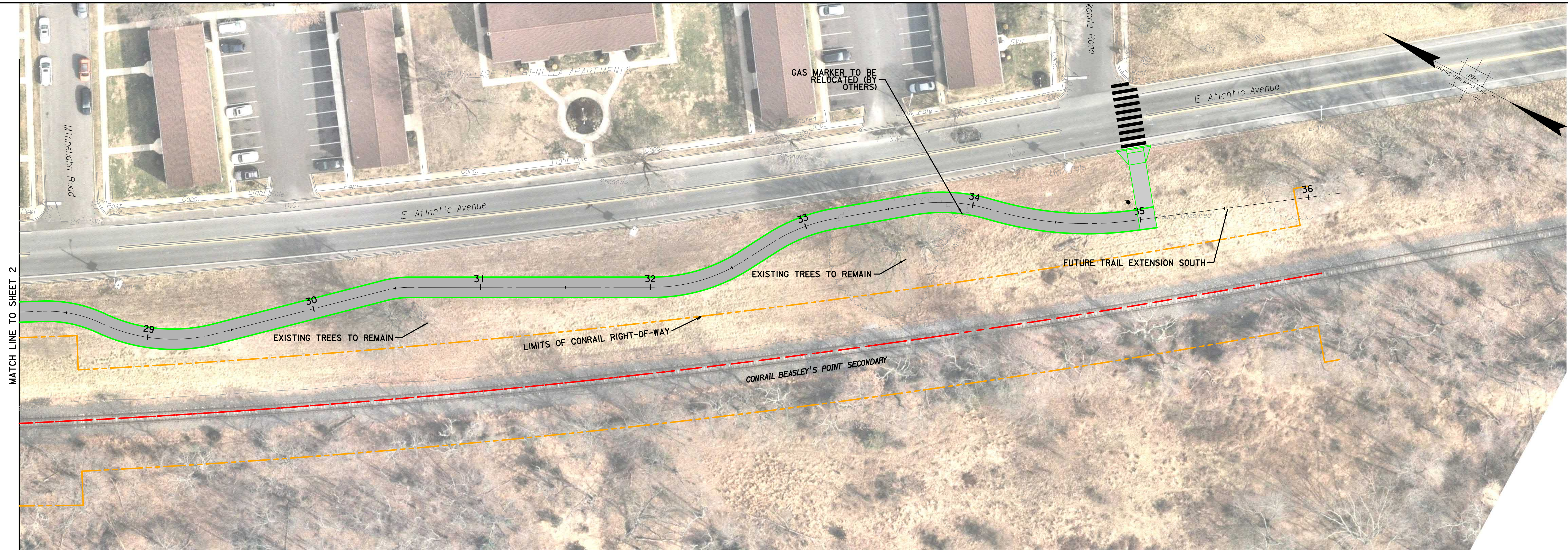
1315 Walnut Street, Suite 900
Philadelphia, PA 19107
Certification of Authorization No. 24GA27930500

CAMDEN COUNTY LINK TRAIL
SEGMENT 1C
PUBLIC MEETING PLAN VIEW LAYOUT

CAMDEN COUNTY

NEW JERSEY

PROJECT NO	DATE
540.1C	JULY 2020
DRAWN BY	DESIGNED BY
LC	LC
SCALE	CHECKED BY
1"=30'	ML
NV5	
SHEET NO. 2	of 3



LEGEND

- PROPOSED EDGE OF TRAIL & SIDEWALK
- PROPOSED CURB
- CENTERLINE OF TRAIL
- CONRAIL RIGHT-OF-WAY

NOTE: PLAN SHOWN IS PRELIMINARY
AND IS SUBJECT TO CHANGE

REVISION NO.	DATE	REVISION

PLAN VIEW SCALE
0 30 60
SCALE IN FEET

N|V|5

1315 Walnut Street, Suite 900
Philadelphia, PA 19107
Certification of Authorization No. 24GA27930500

CAMDEN COUNTY LINK TRAIL
SEGMENT 1C
PUBLIC MEETING PLAN VIEW LAYOUT

CAMDEN COUNTY

NEW JERSEY

PROJECT NO	DATE
540.1C	JULY 2020
DRAWN BY	DESIGNED BY
LC	LC
SCALE	CHECKED BY
1"=30'	ML
NV5	
SHEET NO.	of
3	3