

LEGEND

- PROPOSED EDGE OF TRAIL & SIDEWALK
- PROPOSED CURB
- CENTERLINE OF TRAIL
- CONRAIL RIGHT-OF-WAY

NOTE: PLAN SHOWN IS PRELIMINARY
AND IS SUBJECT TO CHANGE

REVISION NO.	DATE	REVISION

PLAN VIEW SCALE
0 30 60
SCALE IN FEET

N|V|5

1315 Walnut Street, Suite 900
Philadelphia, PA 19107
Certification of Authorization No. 24GA27930500

CAMDEN COUNTY LINK TRAIL
SEGMENT 1B
PUBLIC MEETING PLAN VIEW LAYOUT

CAMDEN COUNTY

NEW JERSEY

PROJECT NO	DATE
540.1B	JUNE 2020
DRAWN BY	DESIGNED BY
LC	LC
SCALE	CHECKED BY
1"=30'	ML
NV5	
SHEET NO. 1	of 7



LEGEND

- PROPOSED EDGE OF TRAIL & SIDEWALK
- PROPOSED CURB
- CENTERLINE OF TRAIL
- CONRAIL RIGHT-OF-WAY

NOTE: PLAN SHOWN IS PRELIMINARY
AND IS SUBJECT TO CHANGE

REVISION NO.	DATE	REVISION

PLAN VIEW SCALE
0 30 60
SCALE IN FEET

N|V|5

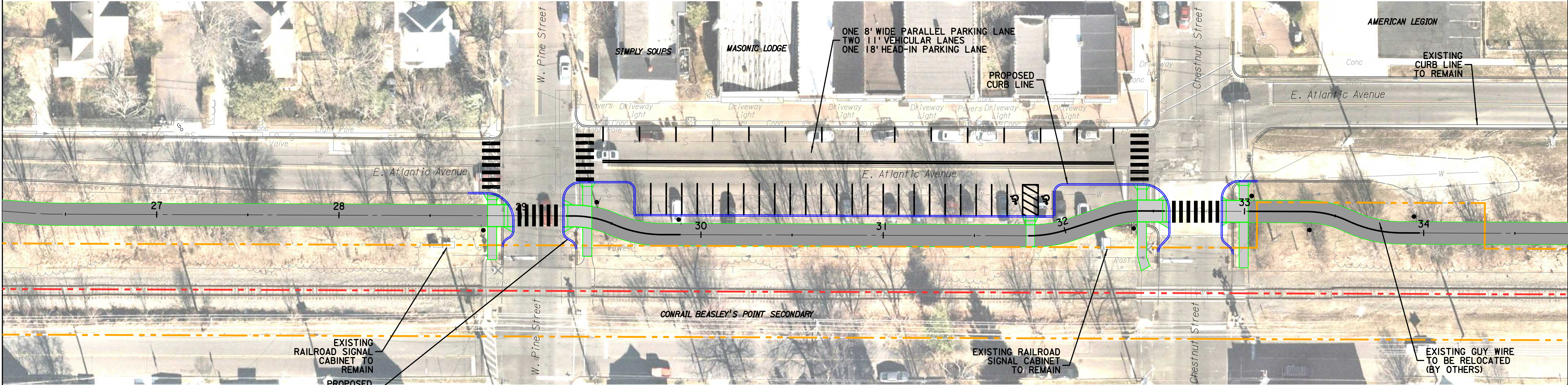
1315 Walnut Street, Suite 900
Philadelphia, PA 19107
Certification of Authorization No. 24GA27930500

CAMDEN COUNTY LINK TRAIL
SEGMENT 1B
PUBLIC MEETING PLAN VIEW LAYOUT

CAMDEN COUNTY

NEW JERSEY

PROJECT NO	DATE
540.1B	JUNE 2020
DRAWN BY	DESIGNED BY
LC	LC
SCALE	CHECKED BY
1"=30'	ML
NV5	
SHEET NO. 2	of 7



LEGEND

- PROPOSED EDGE OF TRAIL & SIDEWALK
- PROPOSED CURB
- CENTERLINE OF TRAIL
- CONRAIL RIGHT-OF-WAY

NOTE: PLAN SHOWN IS PRELIMINARY
AND IS SUBJECT TO CHANGE

REVISION NO.	DATE	REVISION

PLAN VIEW SCALE
0 30 60
SCALE IN FEET

N|V|5

1315 Walnut Street, Suite 900
Philadelphia, PA 19107
Certification of Authorization No. 24GA27930500

CAMDEN COUNTY LINK TRAIL
SEGMENT 1B
PUBLIC MEETING PLAN VIEW LAYOUT

CAMDEN COUNTY

NEW JERSEY

PROJECT NO.	DATE
540.1B	JUNE 2020
DRAWN BY	DESIGNED BY
LC	LC
SCALE	CHECKED BY
1"=30'	ML
NV5	
SHEET NO. 3	of 7



LEGEND

- PROPOSED EDGE OF TRAIL & SIDEWALK
- PROPOSED CURB
- CENTERLINE OF TRAIL
- CONRAIL RIGHT-OF-WAY

NOTE: PLAN SHOWN IS PRELIMINARY
AND IS SUBJECT TO CHANGE

REVISION NO.	DATE	REVISION

PLAN VIEW SCALE
0 30 60
SCALE IN FEET



1315 Walnut Street, Suite 900
Philadelphia, PA 19107
Certification of Authorization No. 24GA27930500

CAMDEN COUNTY LINK TRAIL
SEGMENT 1B
PUBLIC MEETING PLAN VIEW LAYOUT

CAMDEN COUNTY

NEW JERSEY

PROJECT NO	DATE
540.1B	JUNE 2020
DRAWN BY	DESIGNED BY
LC	LC
SCALE	CHECKED BY
1"=30'	ML
NV5	
SHEET NO. 4	of 7



LEGEND

- PROPOSED EDGE OF TRAIL & SIDEWALK
- PROPOSED CURB
- CENTERLINE OF TRAIL
- CONRAIL RIGHT-OF-WAY

NOTE: PLAN SHOWN IS PRELIMINARY
AND IS SUBJECT TO CHANGE

REVISION NO.	DATE	REVISION

PLAN VIEW SCALE
0 30 60
SCALE IN FEET

NV5

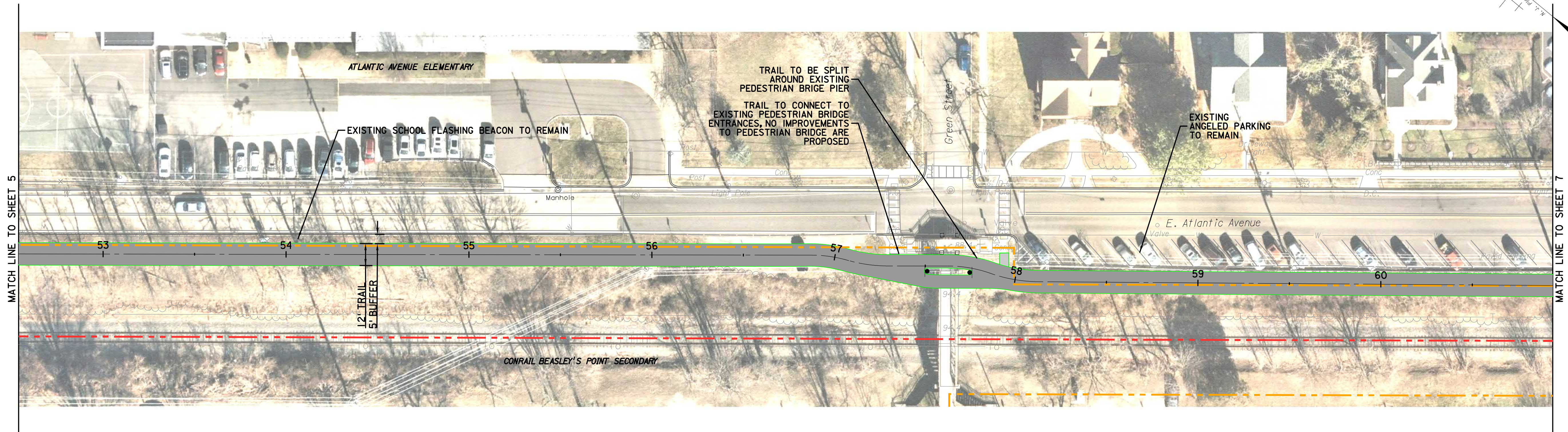
1315 Walnut Street, Suite 900
Philadelphia, PA 19107
Certification of Authorization No. 24GA27930500

CAMDEN COUNTY LINK TRAIL
SEGMENT 1B
PUBLIC MEETING PLAN VIEW LAYOUT

CAMDEN COUNTY

NEW JERSEY

PROJECT NO.	DATE
540.1B	JUNE 2020
DRAWN BY	DESIGNED BY
LC	LC
SCALE	CHECKED BY
1"=30'	ML
NV5	
SHEET NO. 5	of 7



LEGEND

- PROPOSED EDGE OF TRAIL & SIDEWALK
- PROPOSED CURB
- CENTERLINE OF TRAIL
- CONRAIL RIGHT-OF-WAY

NOTE: PLAN SHOWN IS PRELIMINARY
AND IS SUBJECT TO CHANGE

REVISION NO.	DATE	REVISION

PLAN VIEW SCALE
0 30 60
SCALE IN FEET

N|V|5

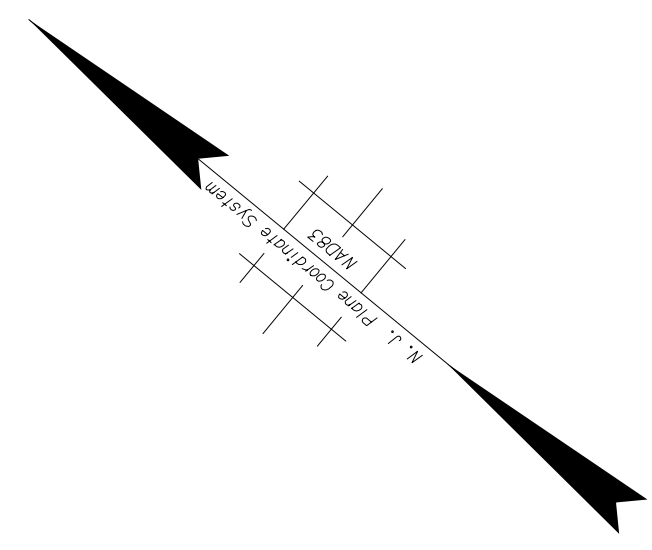
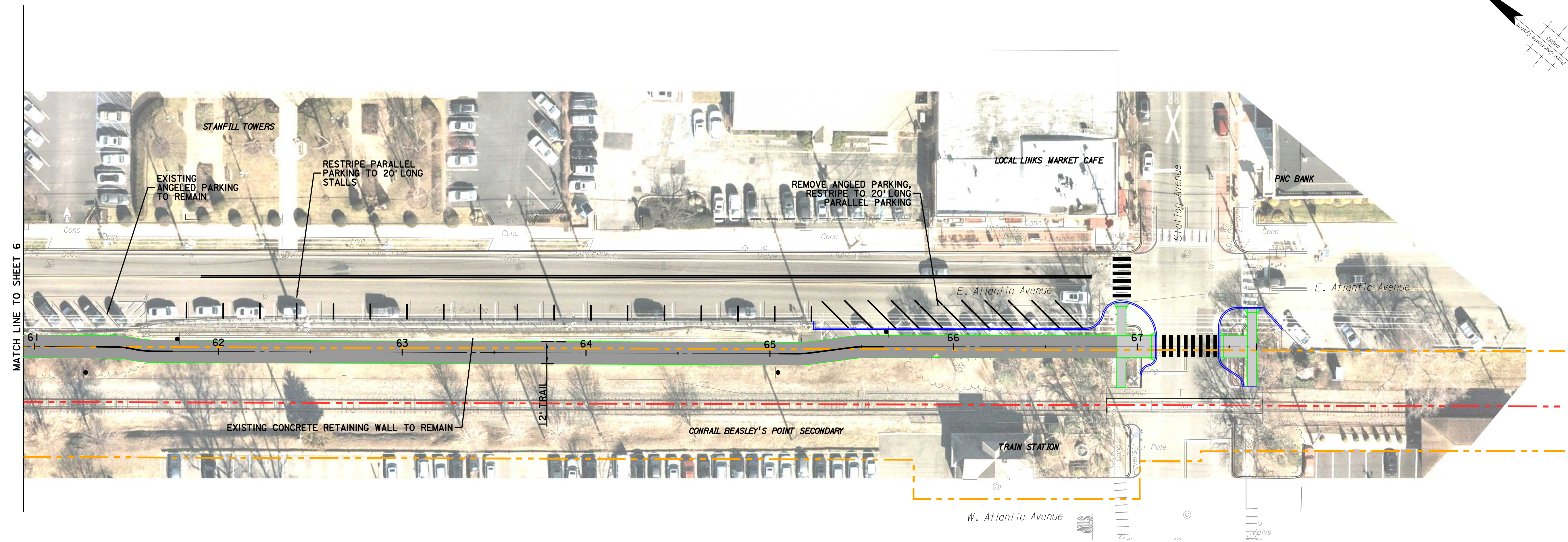
1315 Walnut Street, Suite 900
Philadelphia, PA 19107
Certification of Authorization No. 24GA27930500

CAMDEN COUNTY LINK TRAIL
SEGMENT 1B
PUBLIC MEETING PLAN VIEW LAYOUT

CAMDEN COUNTY

NEW JERSEY

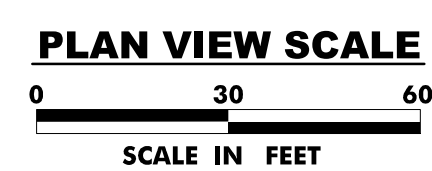
PROJECT NO	DATE
540.1B	JUNE 2020
DRAWN BY	DESIGNED BY
LC	LC
SCALE	CHECKED BY
1"=30'	ML
NV5	
SHEET NO. 6	of 7



LEGEND

- PROPOSED EDGE OF TRAIL & SIDEWALK
 PROPOSED CURB
 CENTERLINE OF TRAIL
 CONRAIL RIGHT-OF-WAY

NOTE: PLAN SHOWN IS PRELIMINARY
AND IS SUBJECT TO CHANGE

[illegible]

N|V|5

**1315 Walnut Street, Suite 900
Philadelphia, PA 19107
Certification of Authorization No. 24GA27930500**

**CAMDEN COUNTY LINK TRAIL
SEGMENT 1B
PUBLIC MEETING PLAN VIEW LAYOUT**

CAMDEN COUNTY

NEW JERSEY

PROJECT NO 540.1B	DATE JUNE 2020
DRAWN BY LC	DESIGNED BY LC
SCALE 1" = 30'	CHECKED BY ML
NV5	
SHEET NO. 7 of 7	