



**Mill and Overlay of Westfield Avenue (CR 610) from Tinsman Avenue (MP 1.57) TO NJ Route 130 (MP 2.92)  
Pennsauken Township, Camden County, New Jersey**

**Notice to Proceed issued: August 30, 2019**  
**Project Completion: August 12, 2020**  
**Project Substantial Completion: July 13, 2020.**  
**Project start: September 4, 2019.**

**Weekly Progress Report**  
**03-23-2020 – 03-27-2020**

**Following Construction Activities took place during above period:**

**Concrete Curb and Sidewalk:**

- a. East and West Concrete curb and sidewalks were constructed along Westfield Avenue, RT at following locations.
  - 1) East and West concrete curb and sidewalk along Lexington Avenue.
  - 2) East concrete curb and sidewalk along Merchantville Avenue.
  - 3) West concrete curb along Merchantville Avenue.

**Two Week Look Ahead:**

- a. Construction of concrete curb and sidewalk started from March 24, 2020 and will be under progress for next two weeks.

**Biweekly Progress Meeting:**

- a. Biweekly progress Meeting No. 7 was held in the field on Friday, March 27, 2020.

**Utility:**

**PSE&G Gas:**

- a. Meeting was held in the field with representative of PSE&G Gas, JMT, Township Engineer and Police Chief of Pennsauken Township, and Contractor (SSI) for communication coordination of PSE&G's Gas leak fix within project limits.
- b. Gas leak fix was performed along Sherman Avenue on Friday, March 27, 2020.

Prepared By:  
Gunvant Mistry  
Resident Engineer



Figure 1: East concrete curb and sidewalk at Merchantville Avenue along Westfield Avenue, RT



Figure 2: West concrete curb at Merchantville Avenue along Westfield Avenue, RT





Figure 3: East concrete curb and sidewalk at Lexington Avenue along Westfield Avenue, RT



Figure 4: West concrete curb and sidewalk at Lexington Avenue along Westfield Avenue, RT



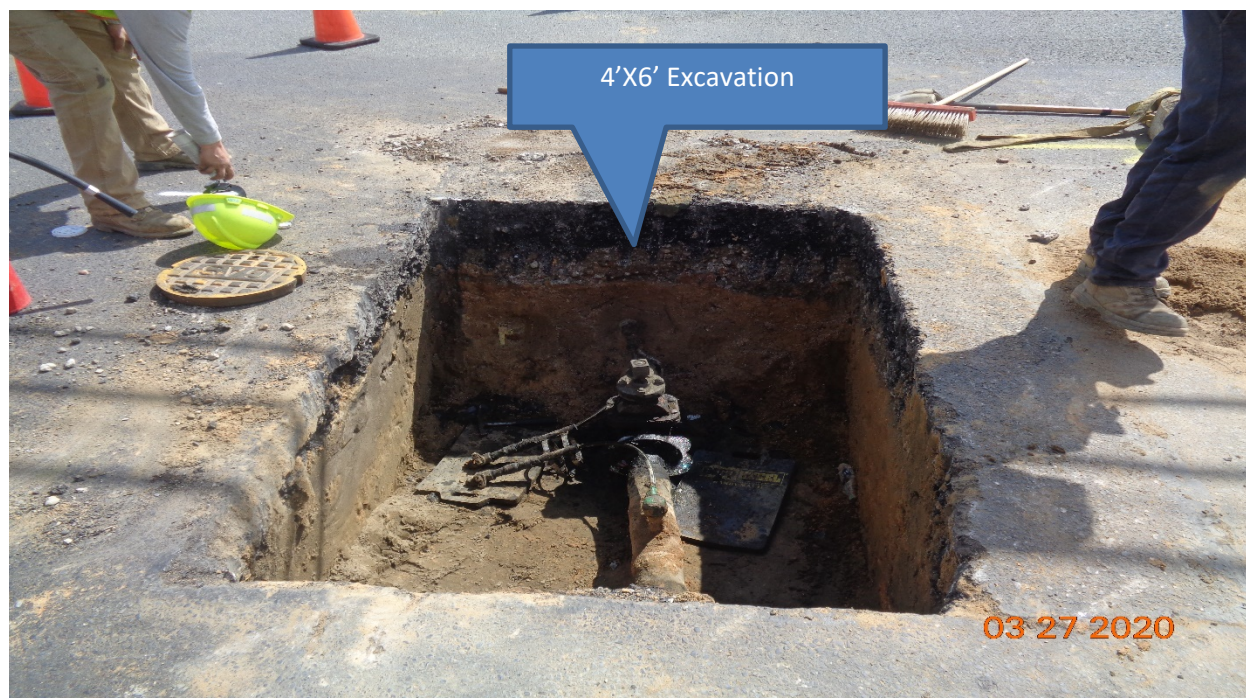


Figure 5: PSE&G Gas leak fix at Sherman Avenue along Westfield Avenue, LT



Figure 6: PSE&G Gas leak fix at Sherman Avenue along Westfield Avenue,