



**Mill and Overlay of Westfield Avenue (CR 610) from Tinsman Avenue (MP 1.57) TO NJ Route 130 (MP 2.92)
Pennsauken Township, Camden County, New Jersey**

Notice to Proceed issued: August 30, 2019
Project Completion: May 10, 2020
Project Substantial Completion: April 10, 2020.
Project start: September 4, 2019.

**Weekly Progress Report
10-14-2019 through 10-18-2019**

Following Construction Activities took place during above period:

Concrete Curb and Sidewalk:

- a. Contractor was not present at site therefore construction activities were not performed.

Drainage:

- a. 16" ductile iron pipe was installed along Westfield Avenue, LT from Inlet along Hillcrest Avenue to Inlet Along Westfield Avenue
- b. 16" ductile iron pipe was installed along Westfield Avenue, LT from Inlet along Westfield Avenue to Inlet along Hollinshead Avenue including Installation of Two Manholes 4' diameter with Manhole Frame and cover.
- c. Existing Type B inlet along Hillcrest Avenue West was Reconstructed using new casting, And Curb piece, Type N ECO was installed.
- d. Reinforced concrete pipes were delivered at site.

Roadway:

- a. All Humps were grinding to smooth travel surface, and all potholes were repaired using Asphalt and compacted with walk behind plate compactor.

Two Week Look Ahead:

- a. Construction of Drainage related activities are started from 10/14/2019 and continue for next two weeks.



Figure 1: Installation of 16" Ductile Iron Pipe from Inlet on Hillcrest Avenue to Inlet along Westfield Avenue, LT



Figure 2: Installation of 16" Ductile Iron Pipe from Inlet on Hillcrest Avenue to Inlet along Westfield Avenue, LT



Figure 3: Installation of 16" Ductile Iron Pipe from Inlet on Hillcrest Avenue to Inlet along Westfield Avenue, LT



Figure 4: Installation of 16" DIP from Inlet along Westfield Avenue to Proposed 4' Diameter Manhole



Figure 5: Installation of 16" DIP Along Westfield Avenue from Proposed Manhole to Proposed Manhole at Hollinshead Avenue.



Figure 5: Installation of 16" DIP Along Westfield Avenue from Proposed Manhole to Proposed Manhole at Hollinshead Avenue.



Figure 5: Installation of 16" DIP Along Westfield Avenue from Proposed Manhole to Proposed Manhole at Hollinshead Avenue.



Figure 6: Installation of 16" DIP to Proposed Manhole at Holinshed Avenue



Figure 7: Installation of 16" DIP from Proposed Manhole at Hollingshead Avenue to Inlet Along Hollinshead Avenue



Figure 8: Manhole Cover frame was installed with Manhole Cover

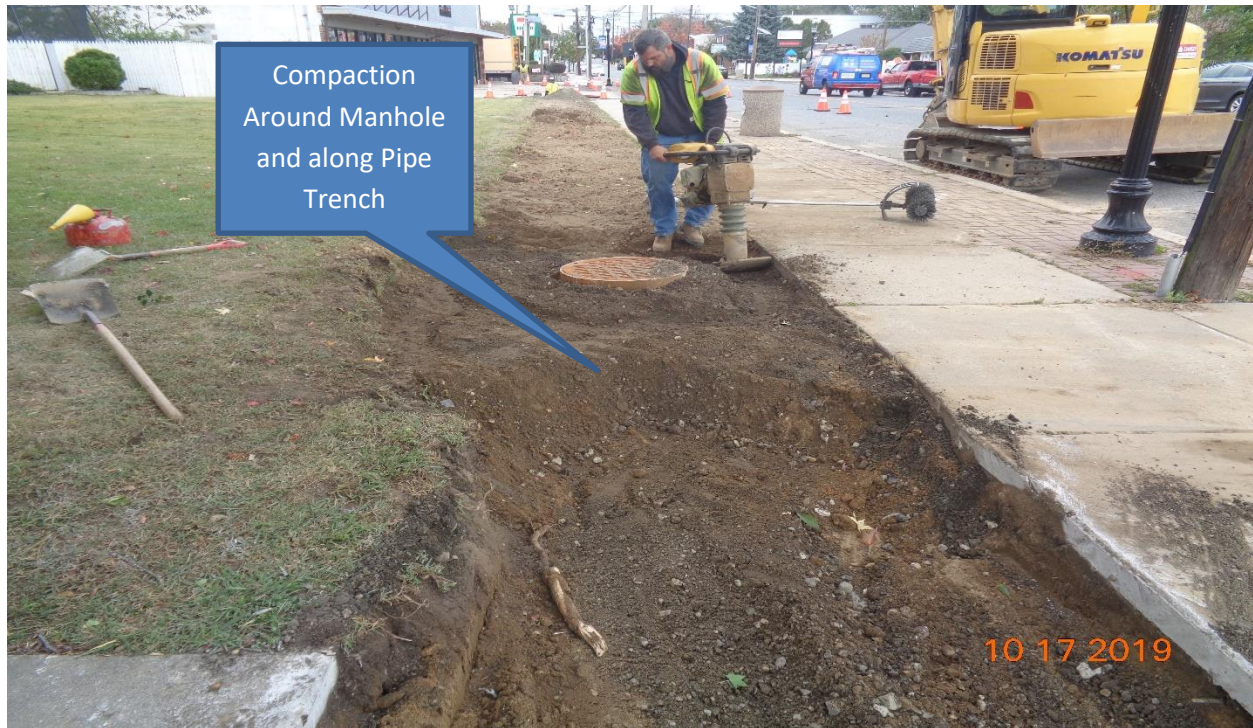


Figure 9: Installation of 16" DIP from Proposed Manhole at Hollingshead Avenue to Inlet Along Hollinshead Avenue



Figure 10: Inlet along Hillcrest Avenue – Reconstructed Inlet Type B using new casting and set curb piece Type N ECO



Figure 11: Reinforced Concrete Pipes were delivered at Site.



Figure 12: Grinding Humps along Westfield Avenue



Figure 13: Grinding Humps along Westfield Avenue



Figure 14: Repairing Potholes along Westfield Avenue

Department of Public Works
Complex

Susan Shin-Angulo
Freeholder Liaison

John Wolick
Director

Prepared By:
Gunvant Mistry
Resident Engineer



Charles J. DePalma

2311 Egg Harbor Road
Lindenwold, NJ 08021
Phone 856.566.2980
Fax 856.566.2988

highway@camdencounty.com