



JOHN H. ALLGAIR, PE, PP, LS (1983-2001)
DAVID J. SAMUEL, PE, PP, CME
JOHN J. STEFANI, PE, LS, PP, CME
JAY B. CORNELL, PE, PP, CME
MICHAEL J. McCLELLAND, PE, PP, CME
GREGORY R. VALES, PE, PP, CME

TIMOTHY W. GILLEN, PE, PP, CME
BRUCE M. KOCH, PE, PP, CME
LOUIS J. PLOSKONKA, PE, CME
TREVOR J. TAYLOR, PE, PP, CME
BEHRAM TURAN, PE, LSRP
LAURA J. NEUMANN, PE, PP
DOUGLAS ROHMEYER, PE, CFM, CME
ROBERT J. RUSSO, PE, PP, CME
JOHN J. HESS, PE, PP, CME

Weekly Status Report – Week Ending December 13, 2019

County Route 561 – Phase 1

Haddonfield-Berlin Road from East of Evesham Road (CR 544) to Kresson Road (CR 671)

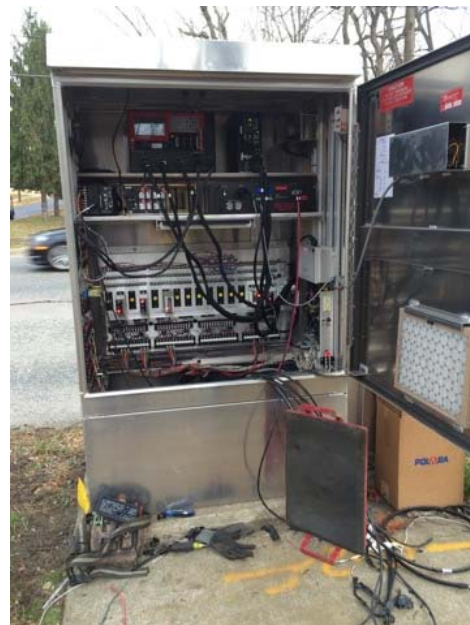
The **CR 561 Haddonfield-Berlin Road Project** was awarded to Lexa Concrete, in the amount of \$4,315,074.89. Please see the attached status breakdown for the various components involved in this project.

Shop Drawing Submittals

- All shop drawing submittals to date have been reviewed and respective reports sent out.

Traffic Signal Improvements

- APS Control Unit for pedestrian signals and image detectors installed at Morris Drive intersection.





December 16, 2019
Our File No. HCM00603.01
Page 2

Storm Sewer

- No work performed this week

Concrete Improvements

- No work performed this week

Roadway Reconstruction

- No work performed this week

Traffic Control

- Construction Signs have been installed per approved Traffic Control Plans
- Police traffic directors are onsite as required

Changes to the Initial Contract Items

- No changes this period.

Contract Completion Date

- The contract completion date is May 4, 2020