

Department of Public Works

Susan Shin Angulo
Freeholder Liaison

John Wolick
Director



Charles J. DePalma Complex
2311 Egg Harbor Road
Lindenwold, NJ 08021
Phone 856.566.2980
Fax 856.566.2988
highway@camdencounty.com

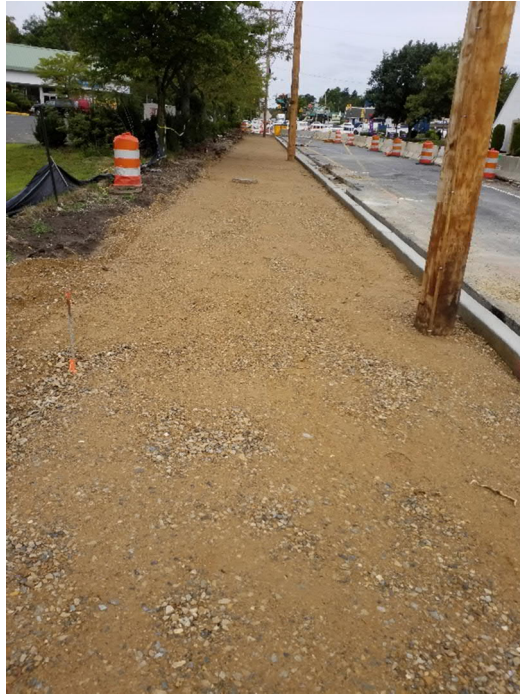


Clementon-Berlin Road (CR 534) Bridge over North Branch of Timber Creek Structure No. 048E006

Borough of Clementon
County of Camden, NJ
Weekly Progress Report #46 & 47
September 2 to September 13, 2019



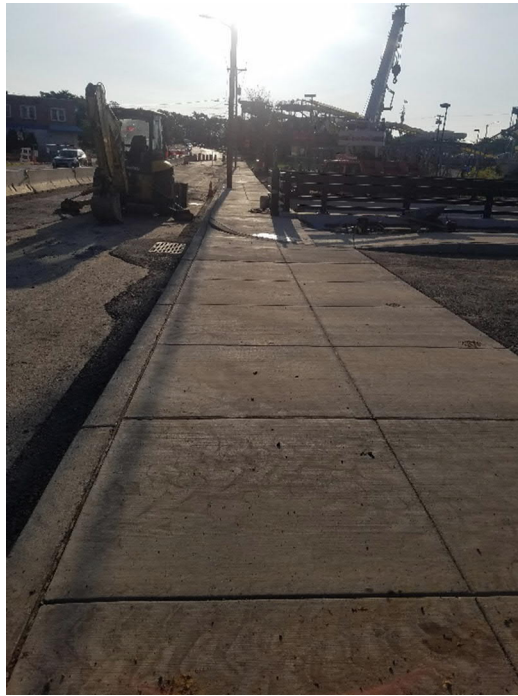
Forming for concrete curb & sidewalk



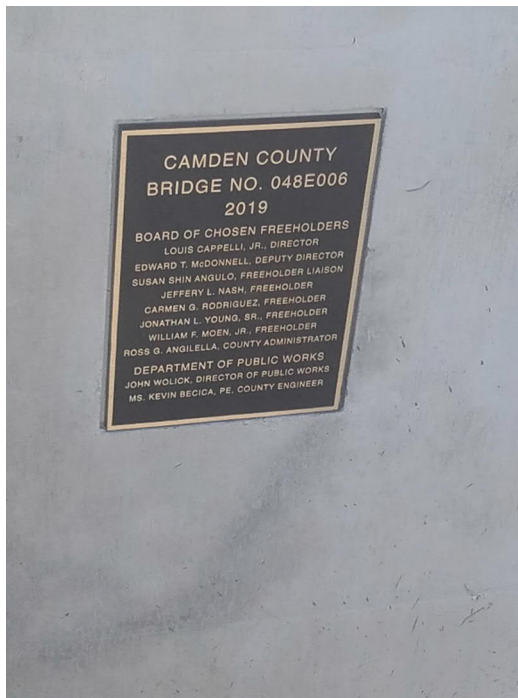
Grading for concrete sidewalk



Vertical curb and sidewalk



Concrete sidewalk & driveway



Bridge plaque

Partial NTP : August 15, 2018
NTP : September 20, 2018

Contractor Duration: 512 days
Completion date February 14, 2020

69.9 % of time used to date

82.7 % paid to date

The Notice to Proceed was given on September 20, 2018. Contractor has the duration of 512 day making the completion date on February 14, 2020.

No work on September 2, 2019 due to holiday.

Week 46

Contractor finished pouring concrete repair in roadway.

Excavated, graded and installed forms for both vertical curb, sidewalk and driveways along the South side.

Week 47

Contractor poured concrete vertical curb, sidewalk and driveways along south side.

Asphalt placed in area in front of vertical curb.

Crane on site to remove temporary pedestrian bridge. Bridge moved to staging area for dismantling.

Bronze bridge plaque installed as per plans.

Roadway swept and general clean up of workzone to facilitate moving to the next phase.

Prepared by: Tony Guerrieri, Jim Carrigan, AECOM