

Department of Public Works

Susan Shin Angulo
Freeholder Liaison

John Wolick
Director

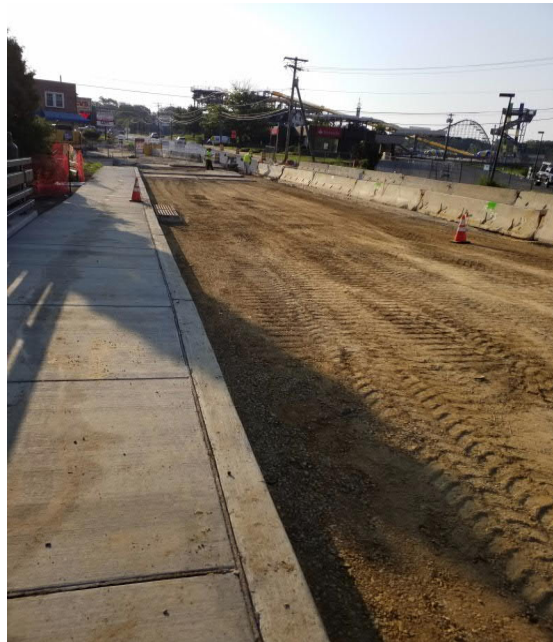


Charles J. DePalma Complex
2311 Egg Harbor Road
Lindenwold, NJ 08021
Phone 856.566.2980
Fax 856.566.2988
highway@camdencounty.com



Clementon-Berlin Road (CR 534) Bridge over North Branch of Timber Creek Structure No. 048E006

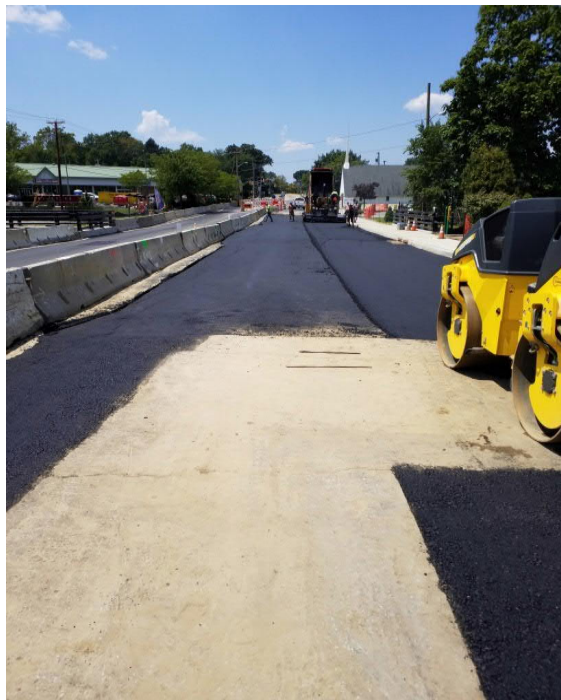
Borough of Clementon
County of Camden, NJ
Weekly Progress Report #41
July 29 to August 2, 2019



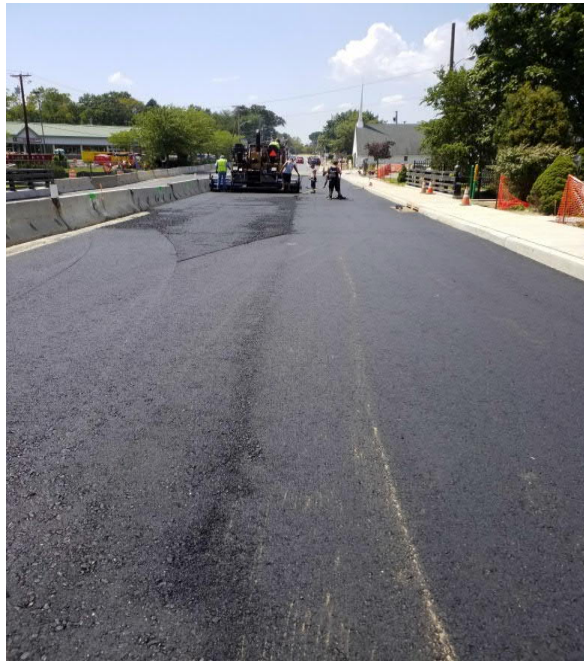
DGA graded and ready for asphalt



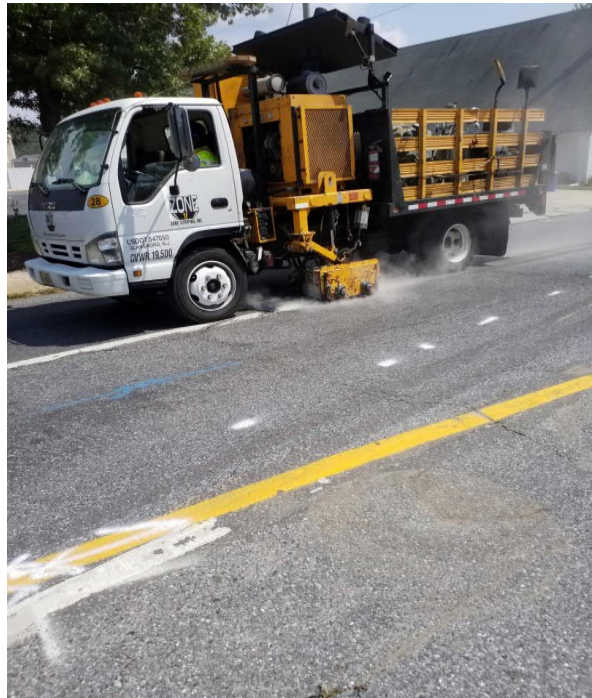
Paving first of two lifts of base



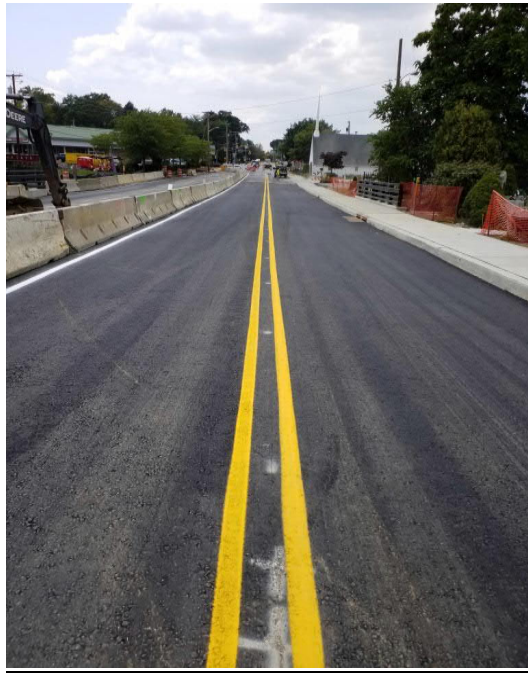
Paving the final lift of base



Roadway looking from East to West



Removing conflicting traffic markings



Installed new traffic marking and traffic transferred, starting Stage Four A

Partial NTP : August 15, 2018
NTP : September 20, 2018

Contractor Duration: 512 days
Completion date February 14, 2020

61.7 % of time used to date

79.1 % paid to date

The Notice to Proceed was given on September 20, 2018. Contractor has the duration of 512 day making the completion date on February 14, 2020.

Final grading on DGA completed on Monday, Paving completed on Tuesday and Traffic detoured on Wednesday to allow for relocation of Jersey barrier, removal of conflicting traffic markings and applying new traffic marking. Road opened to traffic Wednesday afternoon, moving the project into stage four "A". Contractor removed existing temporary asphalt sidewalk (south side) and started to saw cut the roadway.

Prepared by: Tony Guerrieri, Jim Carrigan, AECOM