

Department of Public Works

Susan Shin Angulo  
Freeholder Liaison

John Wolick  
Director



Charles J. DePalma Complex  
2311 Egg Harbor Road  
Lindenwold, NJ 08021  
Phone 856.566.2980  
Fax 856.566.2988  
[highway@camdencounty.com](mailto:highway@camdencounty.com)

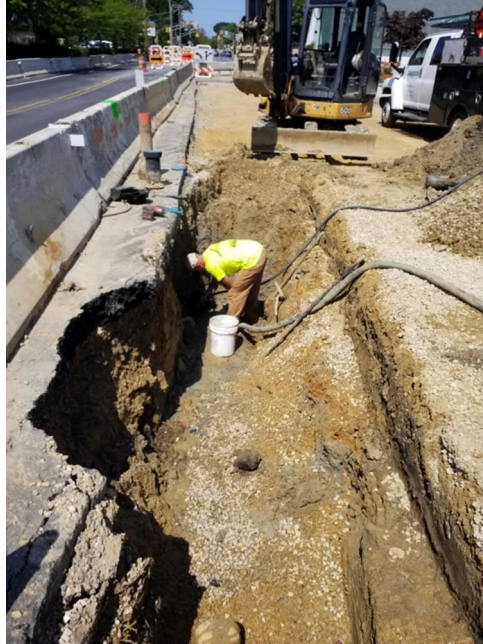


## Clementon-Berlin Road (CR 534) Bridge over North Branch of Timber Creek Structure No. 048E006

Borough of Clementon  
County of Camden, NJ  
Weekly Progress Report #40  
July 22 to July 26, 2019



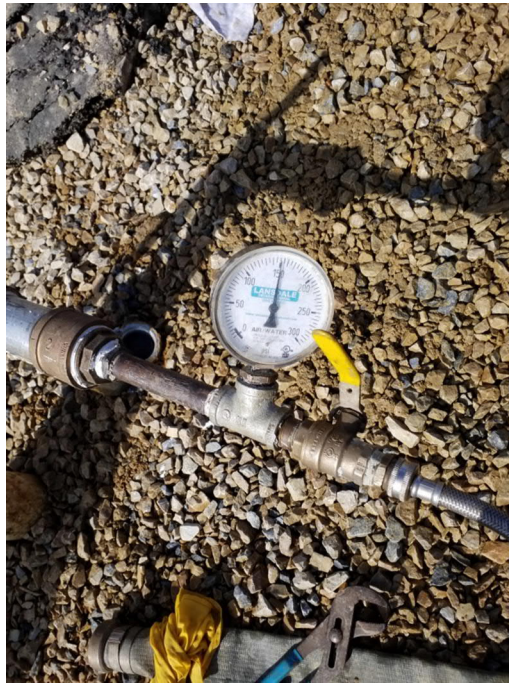
New 6" Water main inside steel casing across culvert.



New main tied into cross over valve and old main.



Attaching service line to new main.



Main pressure tested



Finally, asphalt patch





Force account work completed, back to grading DGA for base.

Partial NTP : August 15, 2018  
NTP : September 20, 2018

Contractor Duration: 512 days  
Completion date February 14, 2020

60.3 % of time used to date

79.1 % paid to date

The Notice to Proceed was given on September 20, 2018. Contractor has the duration of 512 day making the completion date on February 14, 2020.

New water main work completed in 6 days on Force account.

Limit of new water main altered in field after meeting with Clementon water staff.  
New main now includes two cross over line to the South side along with new main.

Prepared by: Tony Guerrieri, Jim Carrigan, AECOM