

Department of Public Works

Susan Shin Angulo  
Freeholder Liaison

John Wolick  
Director

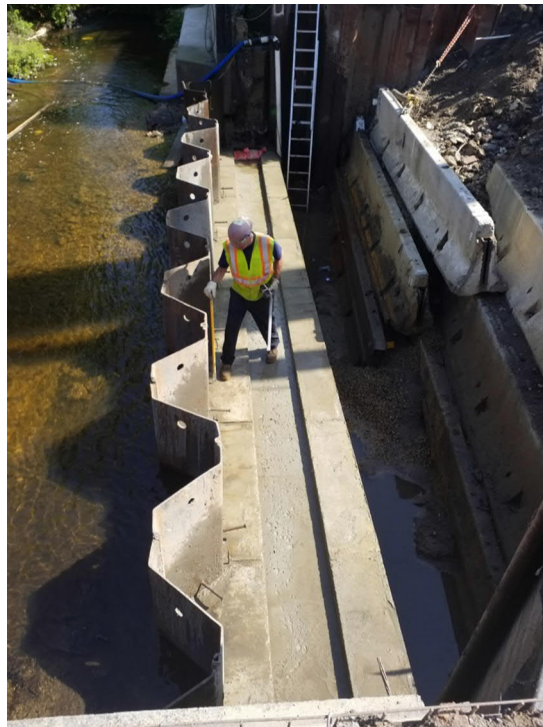


Charles J. DePalma Complex  
2311 Egg Harbor Road  
Lindenwold, NJ 08021  
Phone 856.566.2980  
Fax 856.566.2988  
[highway@camdencounty.com](mailto:highway@camdencounty.com)



## Clementon-Berlin Road (CR 534) Bridge over North Branch of Timber Creek Structure No. 048E006

Borough of Clementon  
County of Camden, NJ  
Weekly Progress Report #31  
May 27 to May 31, 2019



Footing cleaned and prepared to receive  
Precasted culverts.



First of four units being set in place.  
Connectors attached to accept tensioning cable.



Unit being lifted off of flatbed trailer.



Once off the trailer, units are flipped upright.



Last unit being installed.

Partial NTP : August 15, 2018  
NTP : September 20, 2018

Contractor Duration: 512 days  
Completion date February 14, 2020

49.4 % of time used to date

69.4 % paid to date

The Notice to Proceed was giving given on September 20, 2018. Contractor has the duration of 512 day making the completion date on February 14, 2020.

The contractor has installed four precast concrete culverts according to plan. Units were locked together by cable with a hydraulic tensioner. The bases of the units were grouted in place and joints were waterproofed.

Contractor also building form for the wingwall.

Prepared by: Tony Guerrieri, Jim Carrigan, AECOM