



**WESTFIELD AVENUE (CR 610)
MILL & OVERLAY PROJECT – PHASE I
42ND STREET TO VICINITY OF TINSMAN AVENUE
ERI Job # 30750 45
Township of Pennsauken
County of Camden, New Jersey**

**WEEKLY PROGRESS REPORT #9
November 13, 2017 to November 17, 2017**



Figure: 1 – Installation of ADA ramp at the southeast corner of the intersection with 49th Street along the eastbound lane

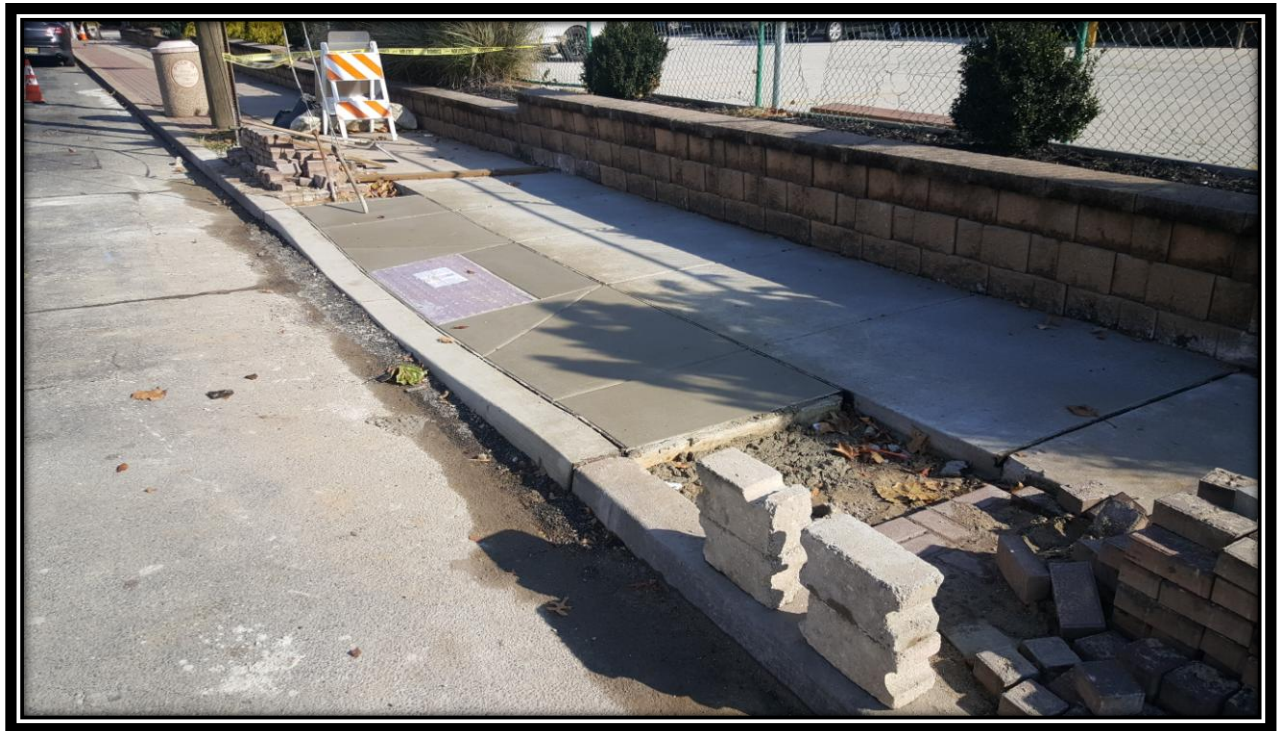


Figure: 2 – Installation of midblock ADA ramp between 48th Street and 49th Street along the eastbound lane



Figure: 3 – Installation of concrete curb between 47th Street and 48th Street along the eastbound lane

Work Completed the Week of November 13, 2017:

Asphalt Paving Systems, Inc. continued concrete work along the eastbound lane between 49th Street and 47th Street. APS installed 74.27 square yards of concrete sidewalk, 4.89 square yards of detectable warning surface, 4.73 square yards of brick pavers, and 91.5 linear feet of concrete vertical curb.

#2: Police Uniform Law Enforcement Officer – 34 Hours

#42: Brick Pavers, Complete – 4.73 SY

#45: Concrete Sidewalk, 4" Thick – 74.27 SY

#48: Detectable Warning Surface – 4.89 SY

#49: 9" x 18" Concrete Vertical Curb – 91.5 LF

Anticipated Work for the Week of November 20, 2017:

The contractor will continue concrete work along the eastbound lane between 47th Street and 45th Street.

Notice to Proceed Date: September 18, 2017

Anticipated Completion Date: February 14, 2018

Prepared By:

A handwritten signature in blue ink, appearing to read 'C. J. Noll', is written over a faint, larger blue signature that appears to read 'C. J. Noll'.

C. Jeremy Noll, PE, CME
Resident Engineer
Environmental Resolutions, Inc.