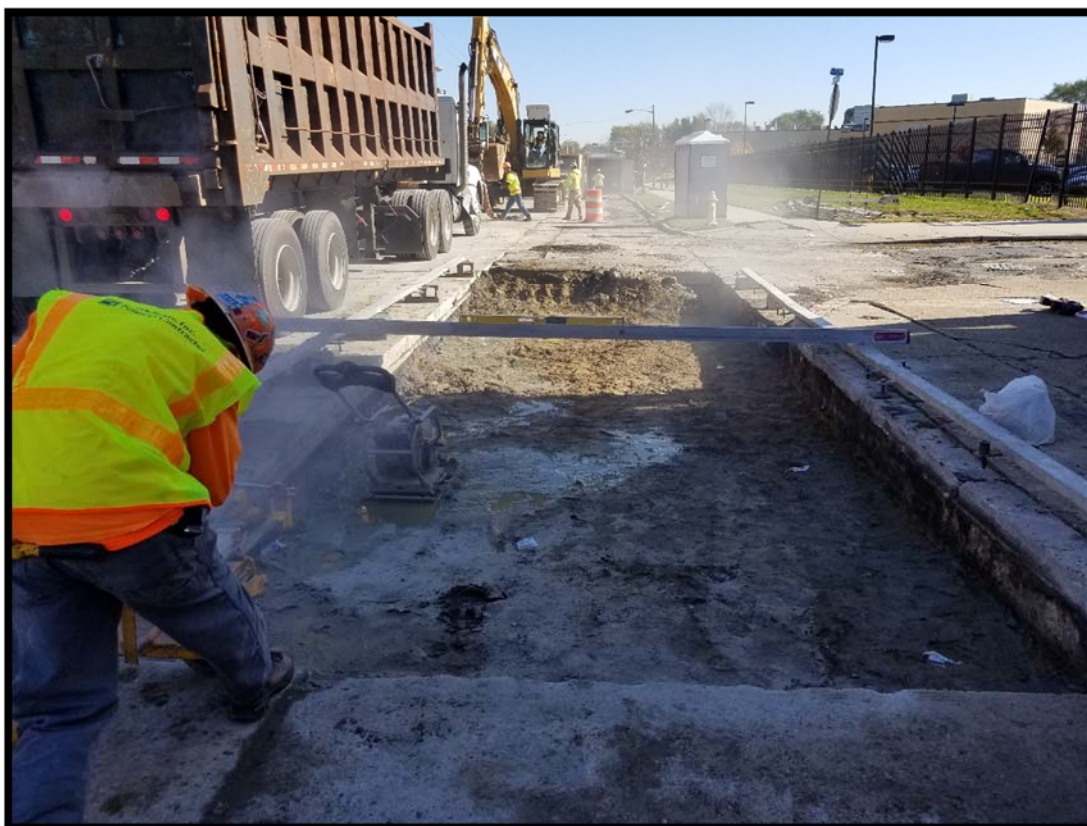


**Federal Street (CR 537) Roadway Improvements
From 19th Street to Marlton Pike (CR 601)
City of Camden, Camden County, NJ
Bid B5-18
NJDOT County Aid Project: CA-PRO-2017-Camden County-00037**

**Progress Report #2
November 5, 2018 through November 16, 2018**

Progress Photographs:



Existing slabs removed and preparation of subbase and installation of dowels underway.



Drilling dowel holes in existing slab scheduled to remain in place.



Subbase prepared, dowels installed, ready for precast slab to be installed



New precast reinforced concrete slab being lowered into place.



Slab #K38 being lowered into place around reset manhole casting.

Work Completed this Report Cycle:

- Phase 1 Traffic Control Devices remain in place and lanes remain shifted to the north. Phase 1 Work Zone continues in southernmost lanes of Federal Street. Camden County Police Department providing Police Traffic Directors.
- Removal of existing slabs, preparation of subbase, installation of dowels and setting of new reinforced precast concrete slabs continue on a daily basis.
- The handicap ramps at the 20th Street intersection were installed to ADA standards. Concrete was protected from forecasted snow storm.
- All 50 of the Phase 1 slabs (100%) have been set to date. Grouting of the dowel pockets will be performed for the Phase 1 slabs prior to the Phase 2 lane shift.

Changes to the Initial Contract items:

- A Field Revision was issued by the Design Engineer, KMA Consulting Engineers, Inc. on November 6, 2018 whereby two existing "A" inlets previously slated to be converted to manholes are to remain in place and will be reset to grade under the pay item "Reset Existing Casting".
- The prefabricated manhole opening in Slab K38 did not align with the existing manhole. A Field Directive was issued by the County Engineer on November 7, 2018 to remediate the unforeseen condition. A sawcut is to be installed 2' to the west of the previously set Slab K3. Slabs K3 through K9 to be removed and reset 2' to the west. Slabs K35 through K38 to be set 2' to the west in order to align with the manhole. The 2' opening at the western edge of the slabs to be infilled with pour in place concrete per NJDOT Standard Construction Detail for slab repairs. Supplemental Item "Precast Slab Adjustment at K38" to be added to the contract after freeholder approval of Change Order in the amount of \$15,204.31.

Project Schedule:

- The Project Completion Date is Friday, January 18, 2019.
- 33% of time used to date
- 0.0% paid to date.

Prepared by: Mark R. Basehore, Jr., PE, CME
Bach Associates, PC