

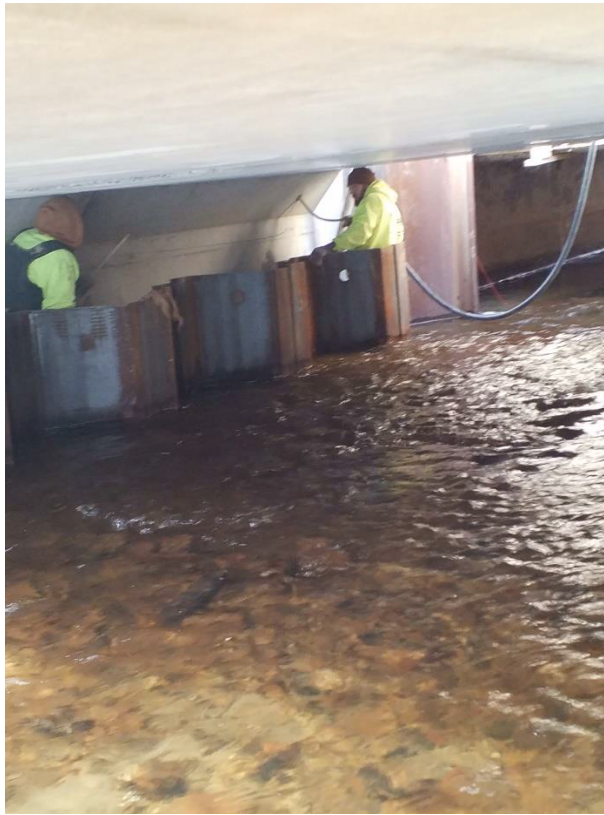


Clementon-Berlin Road (CR 534) Bridge over  
North Branch of Timber Creek Structure No. 048E006

Borough of Clementon  
County of Camden, NJ  
Weekly Progress Report #16  
January 21 to January 25, 2019



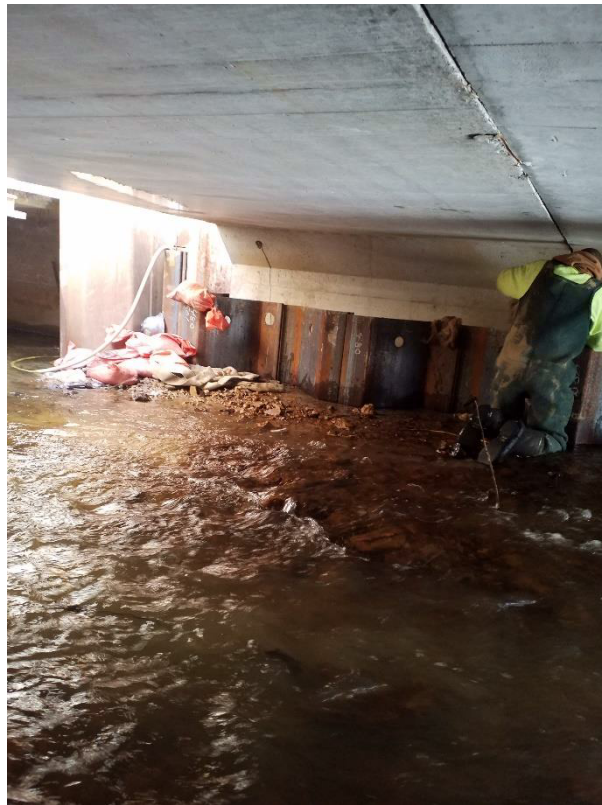
Contractor using grout pump to install grout in the tube for the post tensioning strand



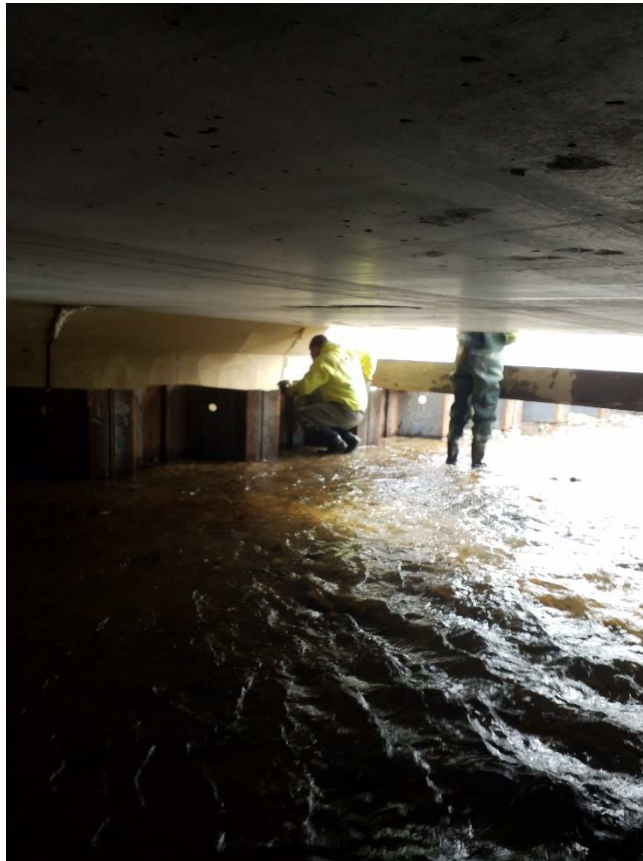
Crew at one end to pump grout to the other end



Area between sheets and culvert had water laying which froze in the cold temperature



Worker making sure grout is moving as it is being pumped



Grouting operation has been completed in this stage

Partial NTP : August 15, 2018  
NTP : September 20, 2018

Contractor Duration: 512 days  
Completion date February 14, 2020

24.8% of time used to date

50.9% paid to date

The Notice to Proceed was given on September 20, 2018. Contractor has the duration of 512 day making the completion date on February 14, 2020.

Contractor been working on the different items in stage 2B. One item was the grouting of the tube where the post tension strand runs through. Inlets have been installed, I-9 continues to be placed. Progress is moving along in this stage.

Contractor plans on installing the railing next week and continue on roadway items that are required in this stage.

Prepared by: Tony Guerrieri, AECOM Project Manager