



Clementon-Berlin Road (CR 534) Bridge over
North Branch of Timber Creek Structure No. 048E006

Borough of Clementon
County of Camden, NJ
Weekly Progress Report #14
January 7 to January 11, 2019



Installed re-bar and setting forms for Wingwall on East side



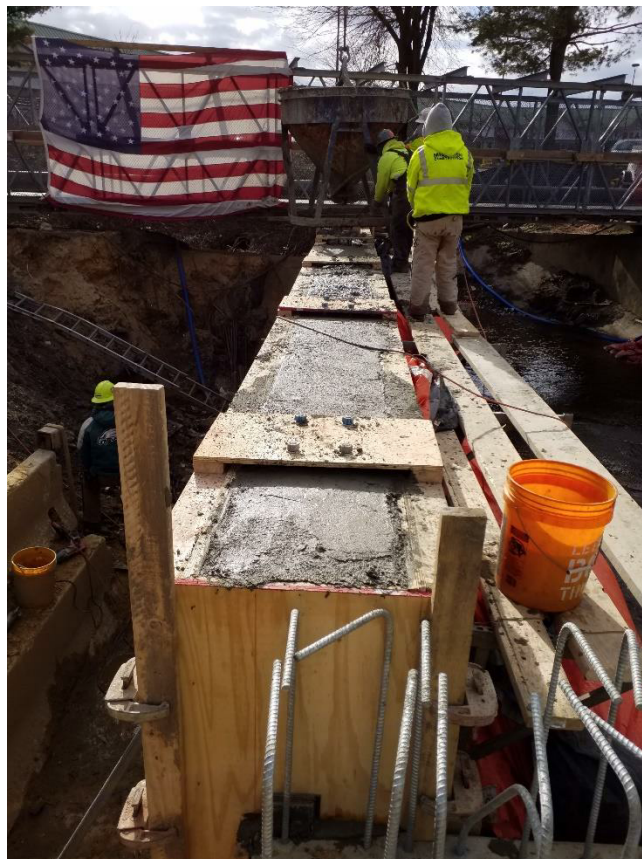
East side wingwall forms looking at it from the west side



Forms all set and anchor bolts in place for railing



Contractor poured east wing wall on Thursday



After concrete was poured and waiting to finish surface

Partial NTP : August 15, 2018
NTP : September 20, 2018

Contractor Duration: 512 days
Completion date February 14, 2020

22% of time used to date

50.9% paid to date

The Notice to Proceed was given on September 20, 2018. Contractor has the duration of 512 day making the completion date on February 14, 2020.

Contractor formed and poured the east side Wingwall. The next will be the west side. They also set in place inlets and RCP that went into the side of the culvert. I-9 was placed at or near the culvert. Once wingwalls forms are removed they will place I-9 behind the wall.

The contractor will continue on forming the west side and pouring wingwall after which they will continue working on the roadway in this stage.

Prepared by: Tony Guerrieri, AECOM Project Manager