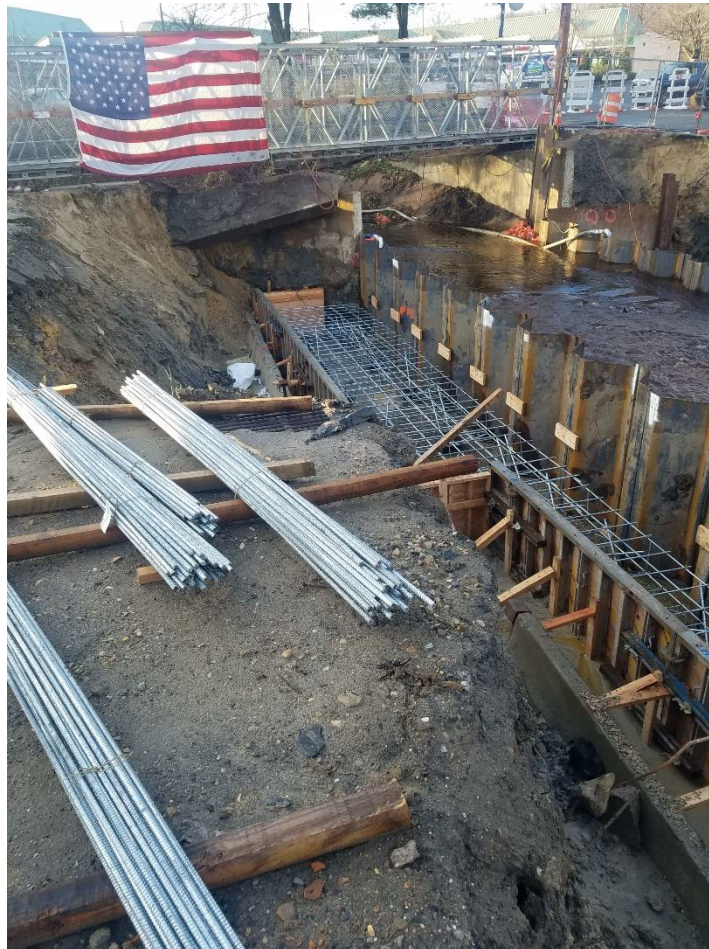


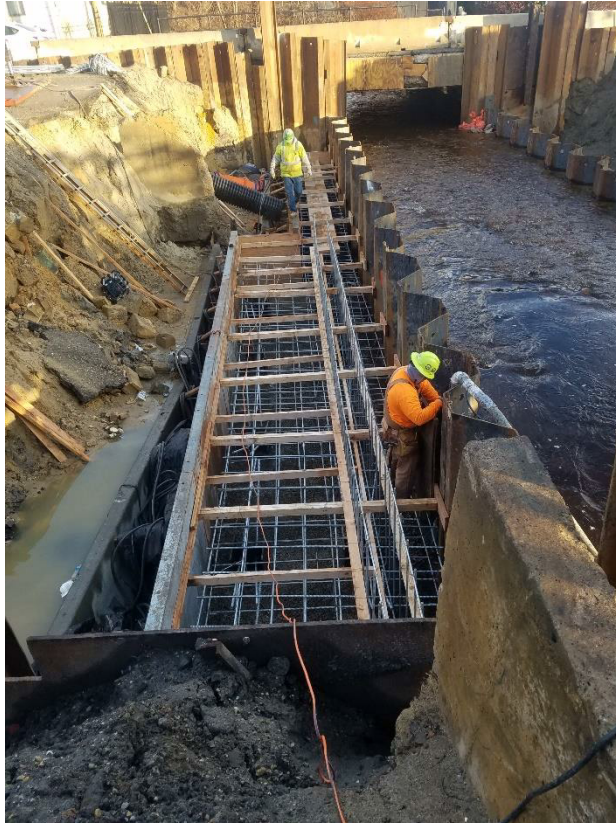


Clementon-Berlin Road (CR 534) Bridge over
North Branch of Timber Creek Structure No. 048E006

Borough of Clementon
County of Camden, NJ
Weekly Progress Report #11
December 10 to December 14



Contractor forms footing on the West side of the bridge and is installing re-steel



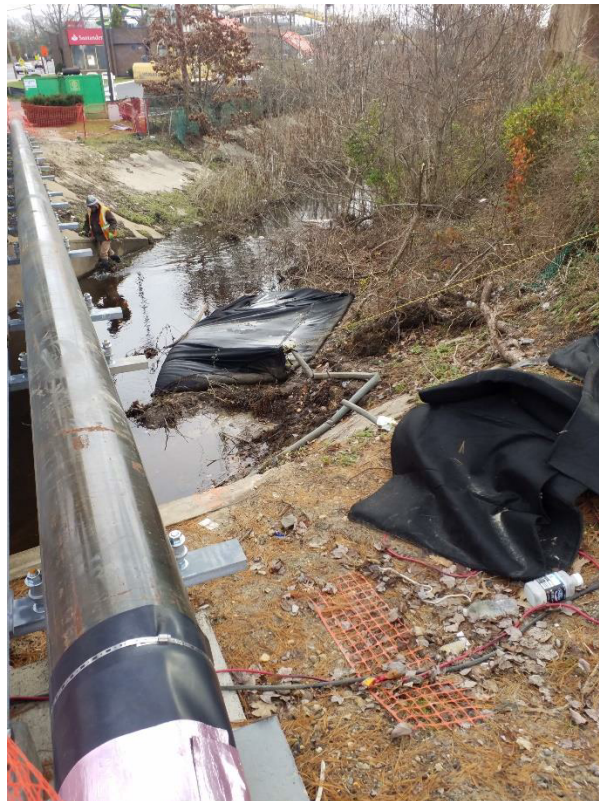
Install keyways and supports braces for pour at west abutment



More sand bags needed to be placed to keep water out



Existing slab was undermined due to rain. Slab was removed



Silt bag still in use to keep footing area dry.

Partial NTP : August 15, 2018
NTP : September 20, 2018

Contractor Duration: 512 days
Completion date February 14, 2020

14.8% of time used to date

32.9% paid to date

The Notice to Proceed was given on September 20, 2018. Contractor has the duration of 512 day making the completion date on February 14, 2020.

Contractor formed and installed re-steel for the west footing. They plan on pouring concrete Monday December 17th. The east side will be formed and poured on Wednesday December 19th.

The schedule is to set the 3-sided culvert on December 27th.

Prepared by: Tony Guerrieri, AECOM Project Manager