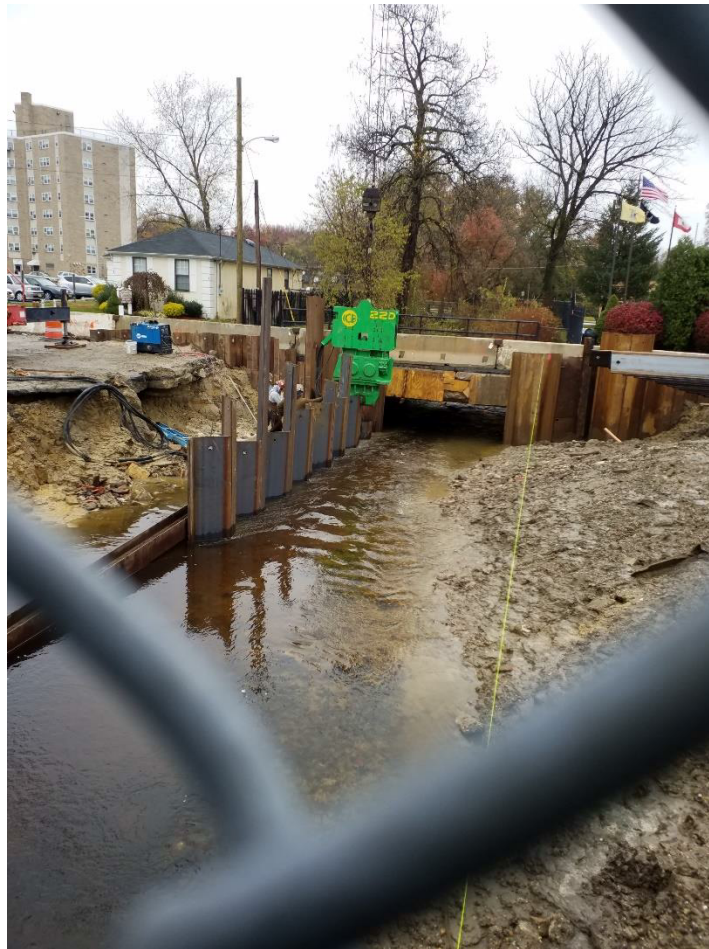




Clementon-Berlin Road (CR 534) Bridge over  
North Branch of Timber Creek Structure No. 048E006

Borough of Clementon  
County of Camden, NJ  
Weekly Progress Report #10  
December 3 to December 7



Steel sheeting being vibrated in to create a dry area to install piles



Excavating area behind steel sheets to allow for construction of piles and footing



Pile layout on west side of structure





Driving H piles. All piles have been driven in Stage 2 B of project



Damage roadway traveling WB was repaired.

Partial NTP : August 15, 2018  
NTP : September 20, 2018

Contractor Duration: 512 days  
Completion date February 14, 2020

14.8% of time used to date

32.9% paid to date

The Notice to Proceed was given on September 20, 2018. Contractor has the duration of 512 day making the completion date on February 14, 2020.

After demo was completed, steel sheets were installed to create a dry area for the installation of piles and construction of the footings. Once test piles were driven, the driving criteria was established and production piles were driven. Now all piles in this stage are completed and form and pour footings will be the next activity on the project.

The week December 24<sup>th</sup> the contractor plans to set the 3-sided culvert.

Prepared by: Tony Guerrieri, AECOM Project Manager