

OK K BECA 12/12/17

HOOD AVE. DETOUR FROM CUTHBERT BLVD. TO MERCHANT ST. AUDUBON, NJ
Work Hours: 9am - 2pm Mon - Fri
7am - 4pm Sat & Sun

- MANIFEST**
- 2) ROAD CLOSED AHEAD, W20-3
 - 2) DETOUR AHEAD, W20-2
 - 1) ROAD WORK AHEAD, W20-1
 - 3) ROAD CLOSED LOCAL
 - TRAFFIC ONLY, R11-3 ON TYPE III
 - 1) ROAD CLOSED, R11-2 ON TYPE III
 - 1) DETOUR ARROW LEFT, M4-10L ON TYPE III
 - 1) DETOUR ARROW RIGHT, M4-10R ON TYPE III
 - 3) END DETOUR, M4-8A
 - 2) DETOUR W/ LEFT ARROW, M4-9L
 - 5) DETOUR W/ RIGHT ARROW, M4-9R
 - 3) DETOUR W/ STRAIGHT ARROW, M4-9S
 - 6) HOOD AVE. PLAQUE, 24 X 12
 - 2) HOOD AVE. CLOSED LOCAL TRAFFIC
 - ONLY FOLLOW DETOUR, PLAQUE (OGIBLK) 30 X 60
 - 2) HOOD AVE. CLOSED AHEAD FOLLOW DETOUR, PLAQUE (OG/BLK) 30X60
 - 22) WINDMASTER SIGN STANDS

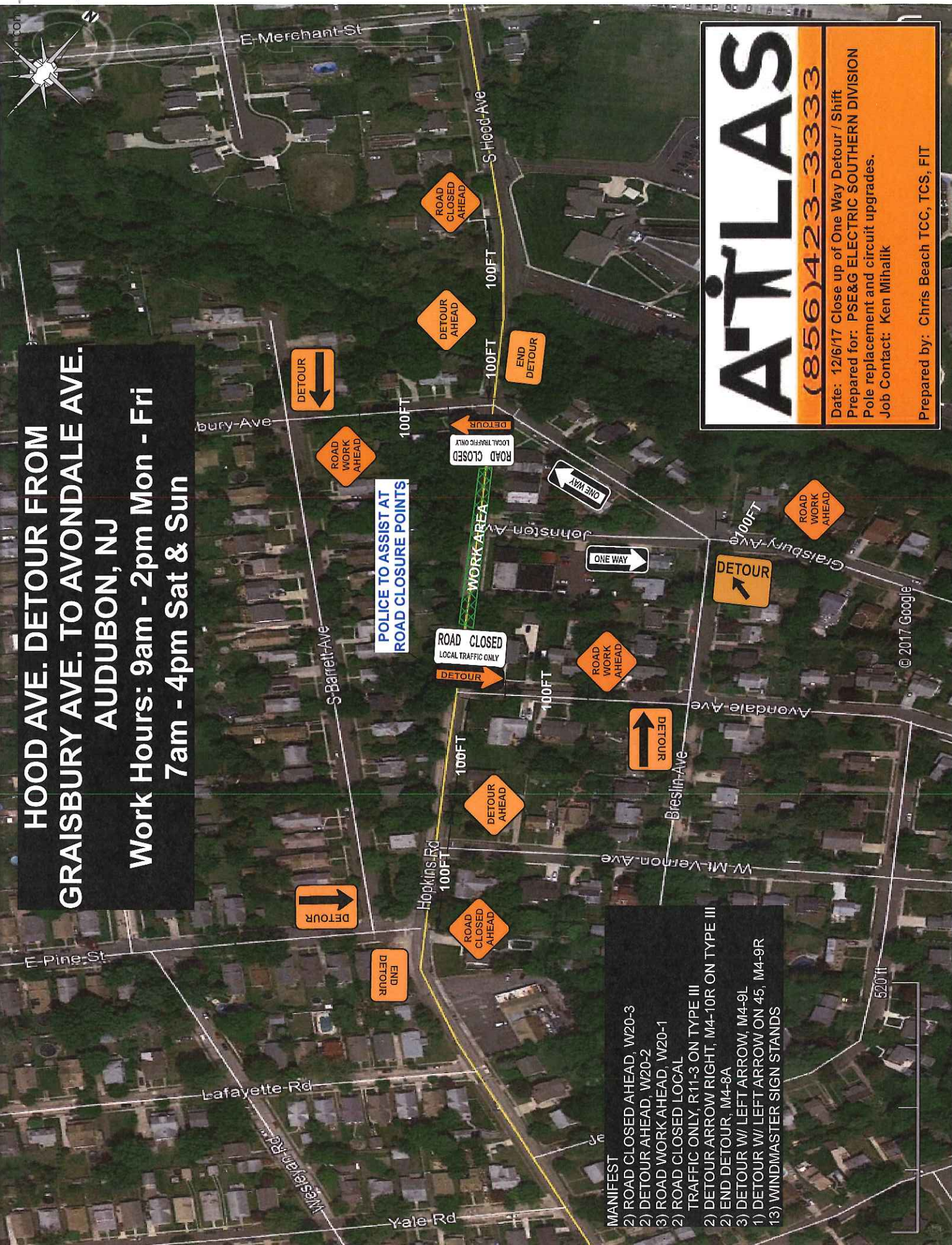


ATLAS
(856) 423-3333
 Date: 12/6/17 REV. 12/11/17 Additional signage & route added per County Engineer.
 Prepared for: PSE&G ELECTRIC SOUTHERN DIVISION
 Pole replacement and circuit upgrades.
 Job Contact: Ken Mihalik
 Prepared by: Chris Beach TCC, TCS, FIT

© 2017 Google

OK K. BEUCA 12/8/17

HOOD AVE. DETOUR FROM GRAISBURY AVE. TO AVONDALE AVE. AUDUBON, NJ
Work Hours: 9am - 2pm Mon - Fri
7am - 4pm Sat & Sun



POLICE TO ASSIST AT ROAD CLOSURE POINTS

- MANIFEST**
- 2) ROAD CLOSED AHEAD, W20-3
 - 2) DETOUR AHEAD, W20-2
 - 3) ROAD WORK AHEAD, W20-1
 - 2) ROAD CLOSED LOCAL TRAFFIC ONLY, R11-3 ON TYPE III
 - 2) DETOUR ARROW RIGHT, M4-10R ON TYPE III
 - 2) END DETOUR, M4-8A
 - 3) DETOUR W/ LEFT ARROW, M4-9L
 - 1) DETOUR W/ LEFT ARROW ON 45, M4-9R
 - 13) WINDMASTER SIGN STANDS

A T L A S

(856)423-3333

Date: 12/6/17 Close up of One Way Detour / Shift
Prepared for: PSE&G ELECTRIC SOUTHERN DIVISION
Pole replacement and circuit upgrades.
Job Contact: Ken Mihalik

Prepared by: Chris Beach TCC, TCS, FIT

© 2017 Google

OK K. BECICA 12/8/17 NOTIFY SCHOOL ADMINISTRATION

A-TLAS
 (856)423-3333
 Date: 12/6/17 One Way Detour Overview
 Prepared for: PSE&G ELECTRIC SOUTHERN DIVISION
 Pole replacement and circuit upgrades.
 Job Contact: Ken Mihalik
 Prepared by: Chris Beach TCC, TCS, FIT

**HOOD AVE. ONE WAY DETOUR FROM
 MERCHANT ST. TO GRAISBURY AVE.
 AUDUBON, NJ (part A)**
**Work Hours: 9am - 2pm Mon - Fri
 7am - 4pm Sat & Sun**

- MANIFEST**
- 1) ROAD CLOSED AHEAD, W20-3
 - 1) DETOUR AHEAD, W20-2
 - 3) ROAD WORK AHEAD, W20-1
 - 1) LANE SHIFT AHEAD, W5-5
 - 1) REVERSE CURVE, W1-4L
 - 1) ROAD CLOSED, R11-2 ON TYPE III
 - 1) DETOUR ARROW RIGHT, M4-10R ON TYPE III
 - 1) END DETOUR, M4-8A
 - 2) DETOUR W/ LEFT ARROW, M4-9L
 - 2) DETOUR W/ STRAIGHT ARROW, M4-9S
 - 1) NO RIGHT TURN, R3-1
 - 1) ONE WAY, R6-1R
 - 50) 28 INCH, TWO COLLAR CONES
 - 14) WINDMASTER SIGN STANDS
 - 14) TYPE III BARRICADE



**POLICE TO ASSIST AT
 ROAD CLOSURE POINTS**
 ©2017 Google

Google Earth

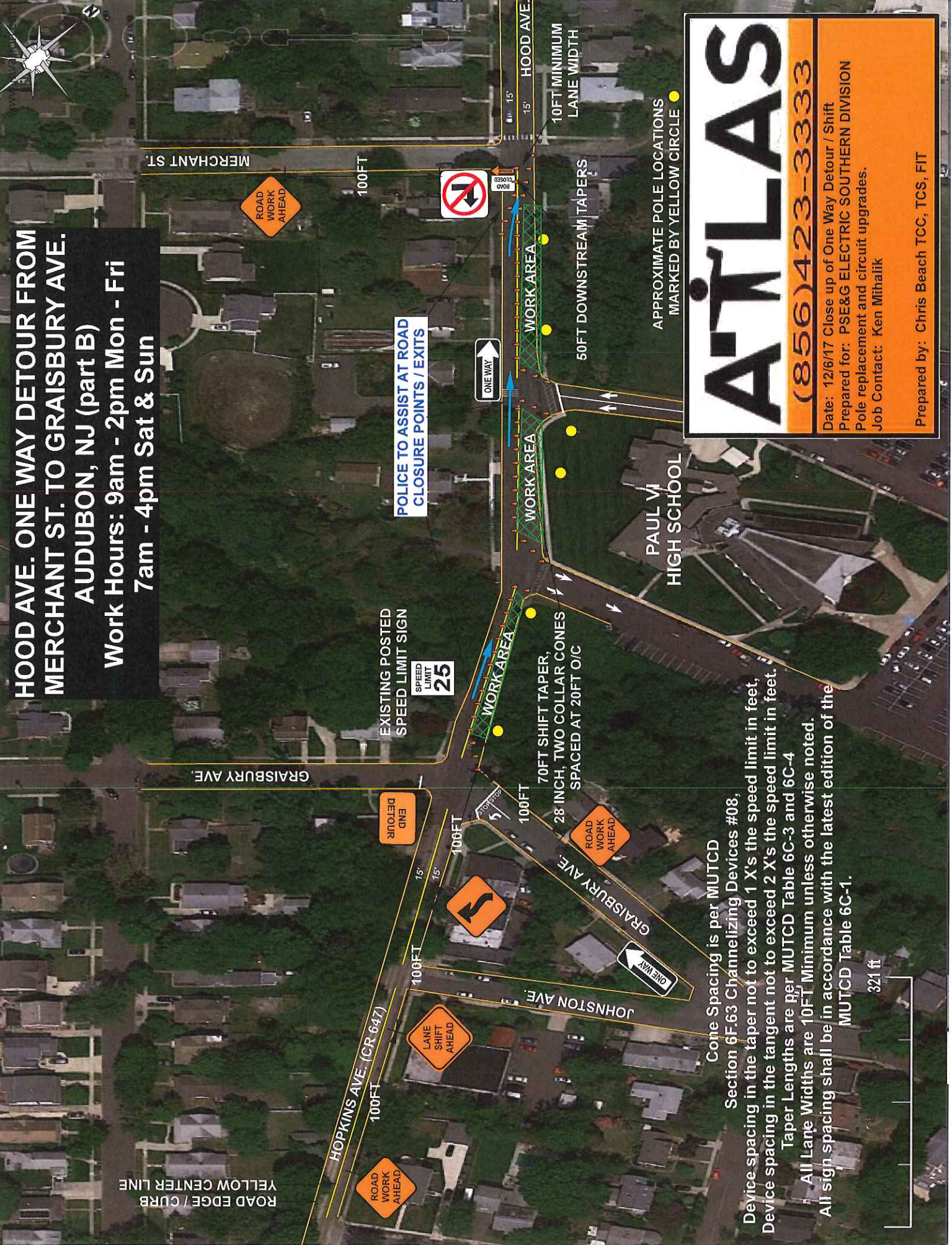
OC KBEUCA 12/5/17 NOTIFY SCHOOL ADMINISTRATION

HOOD AVE. ONE WAY DETOUR FROM MERCHANT ST. TO GRAISBURY AVE.

AUDUBON, NJ (part B)

Work Hours: 9am - 2pm Mon - Fri 7am - 4pm Sat & Sun

ROAD EDGE / CURB YELLOW CENTER LINE



POLICE TO ASSIST AT ROAD CLOSURE POINTS / EXITS

EXISTING POSTED SPEED LIMIT SIGN
SPEED LIMIT 25

APPROXIMATE POLE LOCATIONS MARKED BY YELLOW CIRCLE

ATLAS

(856)423-3333

Date: 12/6/17 Close up of One Way Detour / Shift
Prepared for: PSE&G ELECTRIC SOUTHERN DIVISION
Pole replacement and circuit upgrades.
Job Contact: Ken Mihalik

Prepared by: Chris Beach TCC, TCS, FIT

Cone Spacing is per MUTCD

Section 6F.63 Channelizing Devices #08,

Device spacing in the taper not to exceed 1 X's the speed limit in feet,

Device spacing in the tangent not to exceed 2 X's the speed limit in feet.

Taper Lengths are per MUTCD Table 6C-3 and 6C-4

All Lane Widths are 10FT Minimum unless otherwise noted.

All sign spacing shall be in accordance with the latest edition of the

MUTCD Table 6C-1.

321 ft